

Anti-Phospho-SHC1-Tyr349 antibody (290-370) (STJ90738)

STJ90738

GENERAL INFORMATION

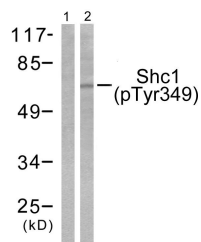
Product Type	Primary antibodies
Short Description	Rabbit polyclonal antibody anti-Phospho-Shc-Transforming Protein 1-Tyr349 (290-370) is suitable for use in Western Blot, Immunohistochemistry, Immunofluorescence and ELISA research applications.
Applications	WB, IHC-P, IF-P, ELISA
Host/Source	Rabbit
Reactivity	Human, Mouse, Rat

PRODUCT PROPERTIES

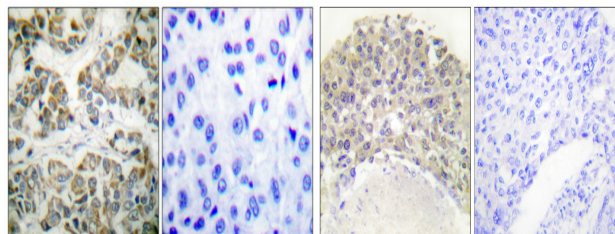
Clonality	Polyclonal
Clone ID	
Concentration	1 mg/mL
Conjugation	Unconjugated
Purification	The antibody was affinity-purified from rabbit anti-serum by affinity-chromatography.
Dilution Range	WB 1:500-1:2000 IHC 1:100-1:300 ELISA 1:10000
Formulation	PBS, 50% Glycerol, 0.5% BSA and 0.02% Sodium Azide.
Isotype	IgG
Storage Instruction	Store at -20°C for up to 1 year from the date of receipt, and avoid repeat freeze-thaw cycles.

TARGET INFORMATION

Gene ID	6464
Gene Symbol	SHC1
Uniprot ID	SHC1_HUMAN
Immunogen	The antiserum was produced against synthesized peptide derived from human Shc around the phosphorylation site of Tyr349 at amino acid range 315-364
Immunogen Region	290-370
Specificity	Phospho-SHC1-Tyr349 polyclonal antibody (Shc-Transforming Protein 1) binds to endogenous Shc-Transforming Protein 1 at the amino acid region 290-370 only when phosphorylated at Tyr349.
Immunogen Sequence	

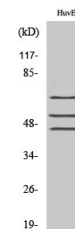


Western blot analysis of lysates from 293 cells treated with EGF 200ng/ml 30', using Shc (Phospho-Tyr349) Antibody. The lane on the left is blocked with the phospho peptide.



Immunohistochemical analysis of paraffin-embedded Human breast cancer. Antibody was diluted at 1:100 (4°C overnight). High-pressure and temperature Tris-EDTA, pH8.0 was used for antigen retrieval. Negative control (right) obtained from antibody was pre-absorbed by immunogen peptide.

Immunohistochemistry analysis of paraffin-embedded human breast carcinoma, using Shc (Phospho-Tyr349) Antibody. The picture on the right is blocked with the phospho peptide.



Western blot analysis of various cells using Phospho-Shc (Y349) Polyclonal Antibody diluted at 1: 1000