

## Anti-Phospho-MAPKAPK2-Thr334 antibody (270-350) (STJ90737)

STJ90737

### GENERAL INFORMATION

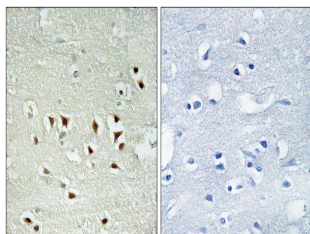
|                          |   |
|--------------------------|---|
| <b>Product Type</b>      | Primary antibodies  |
| <b>Short Description</b> | Rabbit polyclonal antibody anti-Phospho-Map Kinase-Activated Protein Kinase 2-Thr334 (270-350) is suitable for use in Western Blot, Immunohistochemistry, Immunofluorescence and ELISA research applications. |
| <b>Applications</b>      | WB, IHC-P, IF-P, ELISA  |
| <b>Host/Source</b>       | Rabbit  |
| <b>Reactivity</b>        | Human, Mouse, Rat   |

### PRODUCT PROPERTIES

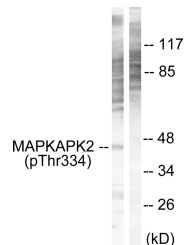
|                            |  |
|----------------------------|--|
| <b>Clonality</b>           | Polyclonal   |
| <b>Clone ID</b>            |  |
| <b>Concentration</b>       | 1 mg/mL  |
| <b>Conjugation</b>         | Unconjugated   |
| <b>Purification</b>        | The antibody was affinity-purified from rabbit anti-serum by affinity-chromatography.          |
| <b>Dilution</b>            | WB 1:500-1:2000  |
| <b>Range</b>               | IHC 1:100-1:300<br>ELISA 1:20000   |
| <b>Formulation</b>         | PBS, 50% Glycerol, 0.5% BSA and 0.02% Sodium Azide.  |
| <b>Isotype</b>             | IgG  |
| <b>Storage Instruction</b> | Store at -20°C for up to 1 year from the date of receipt, and avoid repeat freeze-thaw cycles. |

### TARGET INFORMATION

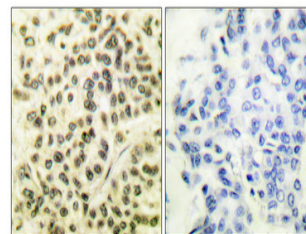
|                           |  |
|---------------------------|--|
| <b>Gene ID</b>            | 9261   |
| <b>Gene Symbol</b>        | MAPKAPK2   |
| <b>Uniprot ID</b>         | MAPK2_HUMAN  |
| <b>Immunogen</b>          | The antiserum was produced against synthesized peptide derived from human MAPKAPK2 around the phosphorylation site of Thr334 at amino acid range 300-349   |
| <b>Immunogen Region</b>   | 270-350  |
| <b>Specificity</b>        | Phospho-MAPKAPK2-Thr334 polyclonal antibody (Map Kinase-Activated Protein Kinase 2) binds to endogenous Map Kinase-Activated Protein Kinase 2 at the amino acid region 270-350 only when phosphorylated at Thr334. |
| <b>Immunogen Sequence</b> |  |



Immunohistochemistry analysis of paraffin-embedded human brain, using MAPKAPK2 (Phospho-Thr334) Antibody. The picture on the right is blocked with the phospho peptide.



Western blot analysis of lysates from NIH/3T3 cells, using MAPKAPK2 (Phospho-Thr334) Antibody. The lane on the right is blocked with the phospho peptide.



Immunohistochemical analysis of paraffin-embedded Human breast cancer. Antibody was diluted at 1:100 (4°C overnight). High-pressure and temperature Tris-EDTA, pH8.0 was used for antigen retrieval. Negative control (right) obtained from antibody was pre-absorbed by immunogen peptide.