

## Anti-Phospho-PTEN-Ser380/T382/T383 antibody (320-400) (STJ90733)

STJ90733

### GENERAL INFORMATION

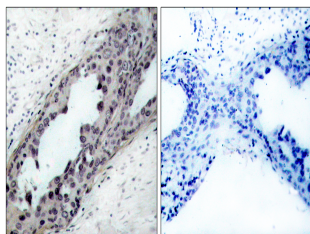
<b>Product Type</b>	Primary antibodies
<b>Short Description</b>	Rabbit polyclonal antibody anti-Phospho-Phosphatidylinositol 3-4-5-Trisphosphate 3-Phosphatase And Dual-Specificity Protein Phosphatase Pten-Ser380/T382/T383 (320-400) is suitable for use in Western Blot, Immunohistochemistry, Immunofluorescence and
<b>Applications</b>	WB, IHC-P, IF-P, ELISA
<b>Host/Source</b>	Rabbit
<b>Reactivity</b>	Human, Mouse, Rat

### PRODUCT PROPERTIES

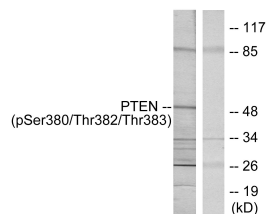
<b>Clonality</b>	Polyclonal
<b>Clone ID</b>	
<b>Concentration</b>	1 mg/mL
<b>Conjugation</b>	Unconjugated
<b>Purification</b>	The antibody was affinity-purified from rabbit anti-serum by affinity-chromatography.
<b>Dilution Range</b>	WB 1:500-1:2000 IHC 1:100-1:300 ELISA 1:20000
<b>Formulation</b>	PBS, 50% Glycerol, 0.5% BSA and 0.02% Sodium Azide.
<b>Isotype</b>	IgG
<b>Storage Instruction</b>	Store at -20°C for up to 1 year from the date of receipt, and avoid repeat freeze-thaw cycles.

### TARGET INFORMATION

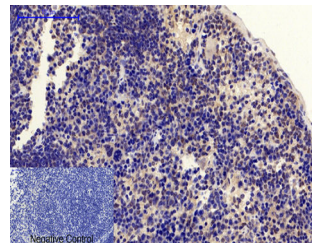
<b>Gene ID</b>	5728
<b>Gene Symbol</b>	PTEN
<b>Uniprot ID</b>	PTEN_HUMAN
<b>Immunogen</b>	The antiserum was produced against synthesized peptide derived from human PTEN around the phosphorylation site of Ser380/Thr382/Thr383. amino acid range:370-400
<b>Immunogen Region</b>	320-400
<b>Specificity</b>	Phospho-PTEN-Ser380/T382/T383 polyclonal antibody (Phosphatidylinositol 3-4-5-Trisphosphate 3-Phosphatase And Dual-Specificity Protein Phosphatase Pten) binds to endogenous Phosphatidylinositol 3-4-5-Trisphosphate 3-Phosphatase And Dual-Specificity P
<b>Immunogen Sequence</b>	



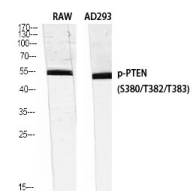
Immunohistochemistry analysis of paraffin-embedded human breast cancer, using PTEN (Phospho-Ser380/Thr382/Thr383) Antibody. The picture on the right is blocked with the PTEN (Phospho-Ser380/Thr382/Thr383) peptide.



Western blot analysis of PTEN (Phospho-Ser380/Thr382/Thr383) Antibody. The lane on the right is blocked with the PTEN (Phospho-Ser380/Thr382/Thr383) peptide.



Immunohistochemical analysis of paraffin-embedded Mouse spleen tissue. 1. PTEN (phospho Ser380/T382/T383) Polyclonal Antibody was diluted at 1:200 (4°C, overnight). 2. Sodium citrate pH 6.0 was used for antibody retrieval (p98°C, 20min). 3. Secondary antibody was diluted at 1:200 (room temperature, 30min). Negative control was used by secondary antibody only.



Western blot analysis of RAW AD293 using Phospho-PTEN (S380/T382/T383) Polyclonal Antibody diluted at 1: 1000

This product is suitable for in-vitro studies under the RESEARCH USE ONLY [RUO] licence. This product must not be used as for diagnostic or other medical purposes.  
St John's Laboratory Ltd, Knowledge Dock Business Centre, University Way, London, E16 2RD | Tel: 0208 223 3081