

Anti-Phospho-IL4R-Tyr497 antibody (440-520) (STJ90720)

STJ90720

GENERAL INFORMATION

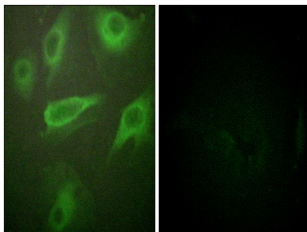
Product Type	Primary antibodies
Short Description	Rabbit polyclonal antibody anti-Phospho-Interleukin-4 Receptor Subunit Alpha-Tyr497 (440-520) is suitable for use in Western Blot, Immunohistochemistry, Immunofluorescence, Immunocytochemistry and ELISA research applications.
Applications	WB, IHC-P, IF, ICC, ELISA
Host/Source	Rabbit
Reactivity	Human, Mouse

PRODUCT PROPERTIES

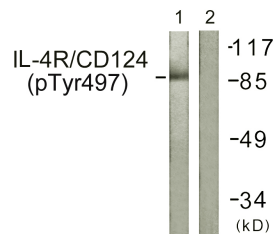
Clonality	Polyclonal
Clone ID	
Concentration	1 mg/mL
Conjugation	Unconjugated
Purification	The antibody was affinity-purified from rabbit anti-serum by affinity-chromatography.
Dilution Range	WB 1:500-1:2000 IHC 1:100-1:300 IF 1:200-1:1000 ELISA 1:5000
Formulation	PBS, 50% Glycerol, 0.5% BSA and 0.02% Sodium Azide.
Isotype	IgG
Storage Instruction	Store at -20°C for up to 1 year from the date of receipt, and avoid repeat freeze-thaw cycles.

TARGET INFORMATION

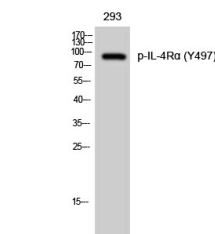
Gene ID	3566
Gene Symbol	IL4R
Uniprot ID	IL4RA_HUMAN
Immunogen	The antiserum was produced against synthesized peptide derived from human IL-4R/CD124 around the phosphorylation site of Tyr497 at amino acid range 463-512
Immunogen Region	440-520
Specificity	Phospho-IL4R-Tyr497 polyclonal antibody (Interleukin-4 Receptor Subunit Alpha) binds to endogenous Interleukin-4 Receptor Subunit Alpha at the amino acid region 440-520 only when phosphorylated at Tyr497.
Immunogen Sequence	



Immunofluorescence analysis of HeLa cells, using IL-4R/CD124 (Phospho-Tyr497) Antibody. The picture on the right is blocked with the phospho-peptide.



Western blot analysis of lysates from 293 cells, using IL-4R/CD124 (Phospho-Tyr497) Antibody. The lane on the right is blocked with the phospho-peptide.



Western blot analysis of 293 cells using Phospho-IL-4R Alpha (Y497) Polyclonal Antibody

This product is suitable for in-vitro studies under the RESEARCH USE ONLY [RUO] licence. This product must not be used as for diagnostic or other medical purposes.
St John's Laboratory Ltd, Knowledge Dock Business Centre, University Way, London, E16 2RD | Tel: 0208 223 3081