

Anti-Phospho-GRB10-Tyr67 antibody (10-90) (STJ90717)

STJ90717

GENERAL INFORMATION

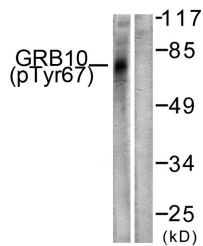
Product Type	Primary antibodies
Short Description	Rabbit polyclonal antibody anti-Phospho-Growth Factor Receptor-Bound Protein 10-Tyr67 (10-90) is suitable for use in Western Blot, Immunohistochemistry, Immunofluorescence, Immunocytochemistry and ELISA research applications.
Applications	WB, IHC-P, IF, ICC, ELISA
Host/Source	Rabbit
Reactivity	Human, Rat, Mouse

PRODUCT PROPERTIES

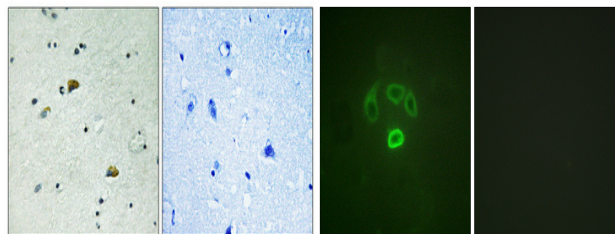
Clonality	Polyclonal
Clone ID	
Concentration	1 mg/mL
Conjugation	Unconjugated
Purification	The antibody was affinity-purified from rabbit anti-serum by affinity-chromatography.
Dilution Range	WB 1:500-1:2000 IHC 1:100-1:300 IF 1:200-1:1000 ELISA 1:20000
Formulation	PBS, 50% Glycerol, 0.5% BSA and 0.02% Sodium Azide.
Isotype	IgG
Storage Instruction	Store at -20°C for up to 1 year from the date of receipt, and avoid repeat freeze-thaw cycles.

TARGET INFORMATION

Gene ID	2887
Gene Symbol	GRB10
Uniprot ID	GRB10_HUMAN
Immunogen	The antiserum was produced against synthesized peptide derived from human GRB10 around the phosphorylation site of Tyr67 at amino acid range 33-82
Immunogen Region	10-90
Specificity	Phospho-GRB10-Tyr67 polyclonal antibody (Growth Factor Receptor-Bound Protein 10) binds to endogenous Growth Factor Receptor-Bound Protein 10 at the amino acid region 10-90 only when phosphorylated at Tyr67.
Immunogen Sequence	

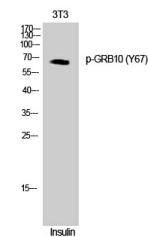


Western blot analysis of lysates from NIH/3T3 cells treated with Insulin 0.01 μM for 15', using GRB10 (Phospho-Tyr67) Antibody. The lane on the right is blocked with the phospho peptide.



Immunohistochemical analysis of paraffin-embedded Human brain. Antibody was diluted at 1:100 (4°C overnight). High-pressure and temperature Tris-EDTA, pH8.0 was used for antigen retrieval. Negative control (right) obtained from antibody was pre-absorbed by immunogen peptide.

Immunofluorescence analysis of HepG2 cells, using GRB10 (Phospho-Tyr67) Antibody. The picture on the right is blocked with the phospho peptide.



Western blot analysis of COLO cells using Phospho-GRB10 (Y67) Polyclonal Antibody

This product is suitable for in-vitro studies under the RESEARCH USE ONLY [RUO] licence. This product must not be used as for diagnostic or other medical purposes.
St John's Laboratory Ltd, Knowledge Dock Business Centre, University Way, London, E16 2RD | Tel: 0208 223 3081