

Anti-Phospho-RB1-Thr826 antibody (570-650) (STJ90716)

STJ90716

GENERAL INFORMATION

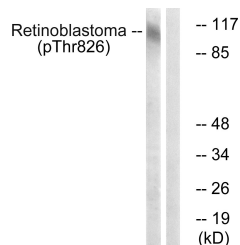
Product Type	Primary antibodies
Short Description	Rabbit polyclonal antibody anti-Phospho-Retinoblastoma-Associated Protein-Thr826 (570-650) is suitable for use in Western Blot, Immunohistochemistry, Immunofluorescence, Immunocytochemistry and ELISA research applications.
Applications	WB, IHC-P, IF, ICC, ELISA
Host/Source	Rabbit
Reactivity	Human, Mouse, Rat

PRODUCT PROPERTIES

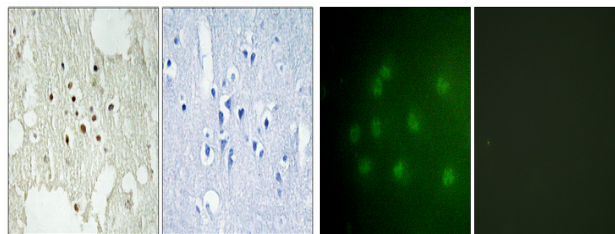
Clonality	Polyclonal
Clone ID	
Concentration	1 mg/mL
Conjugation	Unconjugated
Purification	The antibody was affinity-purified from rabbit anti-serum by affinity-chromatography.
Dilution Range	WB 1:500-1:2000 IHC 1:100-1:300 IF 1:200-1:1000 ELISA 1:10000
Formulation	PBS, 50% Glycerol, 0.5% BSA and 0.02% Sodium Azide.
Isotype	IgG
Storage Instruction	Store at -20°C for up to 1 year from the date of receipt, and avoid repeat freeze-thaw cycles.

TARGET INFORMATION

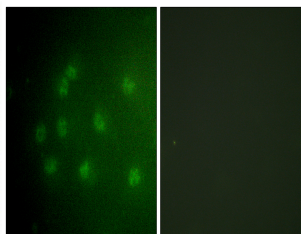
Gene ID	5925
Gene Symbol	RB1
Uniprot ID	RB_HUMAN
Immunogen	The antiserum was produced against synthesized peptide derived from human Retinoblastoma around the phosphorylation site of Thr826 at amino acid range 601-650
Immunogen Region	570-650
Specificity	Phospho-RB1-Thr826 polyclonal antibody (Retinoblastoma-Associated Protein) binds to endogenous Retinoblastoma-Associated Protein at the amino acid region 570-650 only when phosphorylated at Thr826.
Immunogen Sequence	



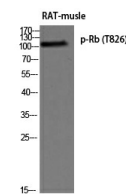
Western blot analysis of lysates from HepG2 cells treated with nocodazole (1 µg/ml, 16h), using Retinoblastoma (Phospho-Thr826) Antibody. The lane on the right is blocked with the phospho peptide.



Immunohistochemical analysis of paraffin-embedded Human brain. Antibody was diluted at 1:100 (4°C overnight). High-pressure and temperature Tris-EDTA, pH8.0 was used for antigen retrieval. Negative control (right) obtained from antibody was pre-absorbed by immunogen peptide.



Immunofluorescence analysis of COS7 cells, using Retinoblastoma (Phospho-Thr826) Antibody. The picture on the right is blocked with the phospho peptide.



Western blot analysis of RAT-muscle using p-Rb (T826) antibody. Antibody was diluted at 1:500 cells nucleus extracted by Minute TM Cytoplasmic and Nuclear Fractionation kit (SC-003, Inventiotech, MN, USA).

This product is suitable for in-vitro studies under the RESEARCH USE ONLY [RUO] licence. This product must not be used as for diagnostic or other medical purposes.
St John's Laboratory Ltd, Knowledge Dock Business Centre, University Way, London, E16 2RD | Tel: 0208 223 3081