

Anti-Phospho-MAPK8IP1-Thr103 antibody (40-120) (STJ90715)

STJ90715

GENERAL INFORMATION

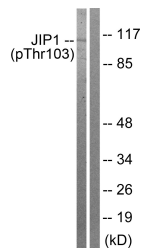
Product Type	Primary antibodies
Short Description	Rabbit polyclonal antibody anti-Phospho-C-Jun-Amino-Terminal Kinase-Interacting Protein 1-Thr103 (40-120) is suitable for use in Western Blot, Immunohistochemistry, Immunofluorescence, Immunocytochemistry and ELISA research applications.
Applications	WB, IHC-P, IF, ICC, ELISA
Host/Source	Rabbit
Reactivity	Human, Mouse, Rat

PRODUCT PROPERTIES

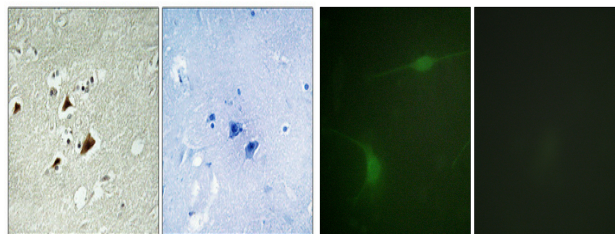
Clonality	Polyclonal
Clone ID	
Concentration	1 mg/mL
Conjugation	Unconjugated
Purification	The antibody was affinity-purified from rabbit anti-serum by affinity-chromatography.
Dilution	WB 1:500-1:2000
Range	IHC 1:100-1:300 IF 1:200-1:1000 ELISA 1:5000
Formulation	PBS, 50% Glycerol, 0.5% BSA and 0.02% Sodium Azide.
Isotype	IgG
Storage Instruction	Store at -20°C for up to 1 year from the date of receipt, and avoid repeat freeze-thaw cycles.

TARGET INFORMATION

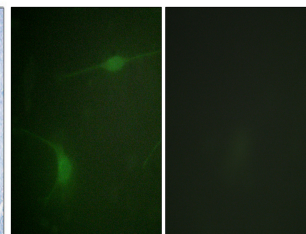
Gene ID	9479
Gene Symbol	MAPK8IP1
Uniprot ID	JIP1_HUMAN
Immunogen	The antiserum was produced against synthesized peptide derived from human JIP1 around the phosphorylation site of Thr103 at amino acid range 69-118
Immunogen Region	40-120
Specificity	Phospho-MAPK8IP1-Thr103 polyclonal antibody (C-Jun-Amino-Terminal Kinase-Interacting Protein 1) binds to endogenous C-Jun-Amino-Terminal Kinase-Interacting Protein 1 at the amino acid region 40-120 only when phosphorylated at Thr103.
Immunogen Sequence	



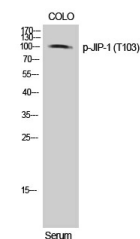
Western blot analysis of lysates from COLO205 cells treated with Serum 20% 15' using JIP1 (Phospho-Thr103) Antibody. The lane on the right is blocked with the phospho peptide.



Immunohistochemical analysis of paraffin-embedded Human brain. Antibody was diluted at 1:100 (4°C overnight). High-pressure and temperature Tris-EDTA, pH8.0 was used for antigen retrieval. Negative control (right) obtained from antibody was pre-absorbed by immunogen peptide.



Immunofluorescence analysis of NIH/3T3 cells, using JIP1 (Phospho-Thr103) Antibody. The picture on the right is blocked with the phospho peptide.



Western blot analysis of COLO cells using Phospho-JIP-1 (T103) Polyclonal Antibody

This product is suitable for in-vitro studies under the RESEARCH USE ONLY [RUO] licence. This product must not be used as for diagnostic or other medical purposes.
St John's Laboratory Ltd, Knowledge Dock Business Centre, University Way, London, E16 2RD | Tel: 0208 223 3081