

## Anti-Phospho-EphB1/2-Tyr594/604 antibody (530-610) (STJ90711)

STJ90711

### GENERAL INFORMATION

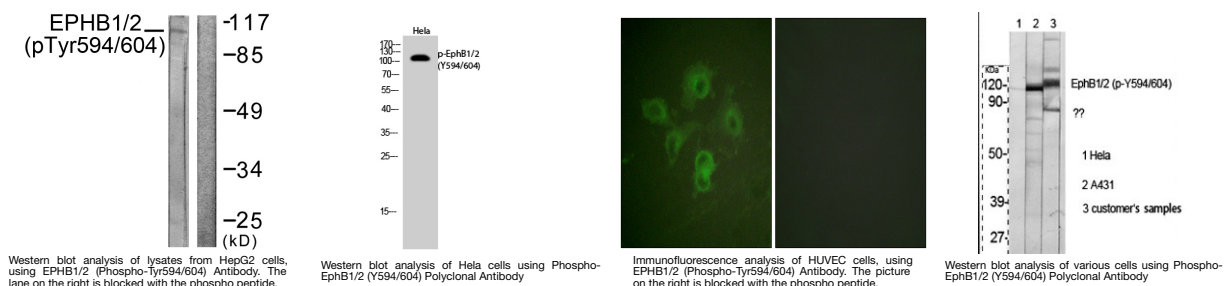
<b>Product Type</b>	Primary antibodies
<b>Short Description</b>	Rabbit polyclonal antibody anti-Phospho-Ephrin type-B receptor 1 and Ephrin type-B receptor 2-Tyr594/604 (530-610) is suitable for use in Western Blot, Immunofluorescence, Immunocytochemistry and ELISA research applications.
<b>Applications</b>	WB, IF, ICC, ELISA
<b>Host/Source</b>	Rabbit
<b>Reactivity</b>	Human, Mouse, Rat

### PRODUCT PROPERTIES

<b>Clonality</b>	Polyclonal
<b>Clone ID</b>	
<b>Concentration</b>	1 mg/mL
<b>Conjugation</b>	Unconjugated
<b>Purification</b>	The antibody was affinity-purified from rabbit anti-serum by affinity-chromatography.
<b>Dilution</b>	WB 1:500-1:2000
<b>Range</b>	IF 1:200-1:1000 ELISA 1:5000
<b>Formulation</b>	PBS, 50% Glycerol, 0.5% BSA and 0.02% Sodium Azide.
<b>Isotype</b>	IgG
<b>Storage Instruction</b>	Store at -20°C for up to 1 year from the date of receipt, and avoid repeat freeze-thaw cycles.

### TARGET INFORMATION

<b>Gene ID</b>	<a href="#">2047</a> <a href="#">2048</a>
<b>Gene Symbol</b>	<a href="#">EPHB1</a> <a href="#">EPHB2</a>
<b>Uniprot ID</b>	<a href="#">EPHB1_HUMAN</a> <a href="#">EPHB2_HUMAN</a>
<b>Immunogen</b>	The antiserum was produced against synthesized peptide derived from human EPHB1/2 around the phosphorylation site of Tyr594/604 at amino acid range 561-610
<b>Immunogen Region</b>	530-610
<b>Specificity</b>	Phospho-EphB1/2-Tyr594/604 polyclonal antibody (Ephrin type-B receptor 1 and Ephrin type-B receptor 2) binds to endogenous Ephrin type-B receptor 1 and Ephrin type-B receptor 2 at the amino acid region 530-610 only when phosphorylated at Tyr594/604.
<b>Immunogen Sequence</b>	



This product is suitable for in-vitro studies under the RESEARCH USE ONLY [RUO] licence. This product must not be used as for diagnostic or other medical purposes.  
St John's Laboratory Ltd, Knowledge Dock Business Centre, University Way, London, E16 2RD | Tel: 0208 223 3081