

## Anti-Phospho-KRT18-Ser52 antibody (40-120) (STJ90707)

STJ90707

### GENERAL INFORMATION

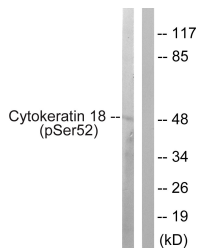
<b>Product Type</b>	Primary antibodies
<b>Short Description</b>	Rabbit polyclonal antibody anti-Phospho-Keratin-Type I Cytoskeletal 18-Ser52 (40-120) is suitable for use in Western Blot, Immunohistochemistry, Immunofluorescence, Immunocytochemistry and ELISA research applications.
<b>Applications</b>	WB, IHC-P, IF, ICC, ELISA
<b>Host/Source</b>	Rabbit
<b>Reactivity</b>	Human, Rat, Mouse

### PRODUCT PROPERTIES

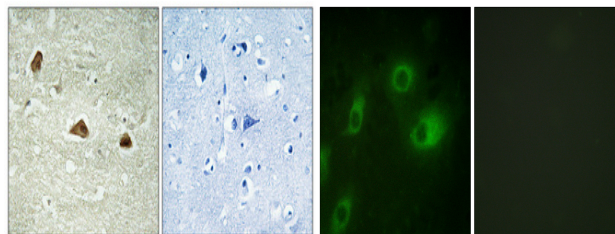
<b>Clonality</b>	Polyclonal
<b>Clone ID</b>	
<b>Concentration</b>	1 mg/mL
<b>Conjugation</b>	Unconjugated
<b>Purification</b>	The antibody was affinity-purified from rabbit anti-serum by affinity-chromatography.
<b>Dilution Range</b>	WB 1:500-1:2000 IHC 1:100-1:300 IF 1:200-1:1000 ELISA 1:10000
<b>Formulation</b>	PBS, 50% Glycerol, 0.5% BSA and 0.02% Sodium Azide.
<b>Isotype</b>	IgG
<b>Storage Instruction</b>	Store at -20°C for up to 1 year from the date of receipt, and avoid repeat freeze-thaw cycles.

### TARGET INFORMATION

<b>Gene ID</b>	3875
<b>Gene Symbol</b>	KRT18
<b>Uniprot ID</b>	K1C18_HUMAN
<b>Immunogen</b>	The antiserum was produced against synthesized peptide derived from human Keratin 18 around the phosphorylation site of Ser52 at amino acid range 21-70
<b>Immunogen Region</b>	40-120
<b>Specificity</b>	Phospho-KRT18-Ser52 polyclonal antibody (Keratin-Type I Cytoskeletal 18) binds to endogenous Keratin-Type I Cytoskeletal 18 at the amino acid region 40-120 only when phosphorylated at Ser52.
<b>Immunogen Sequence</b>	

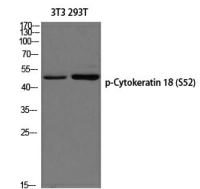


Western blot analysis of lysates from HepG2 cells, using Keratin 18 (Phospho-Ser52) Antibody. The lane on the right is blocked with the phospho peptide.



Immunohistochemical analysis of paraffin-embedded Human brain. Antibody was diluted at 1:100 (4°C overnight). High-pressure and temperature Tris-EDTA, pH8.0 was used for antigen retrieval. Negative control (right) obtained from antibody was pre-absorbed by immunogen peptide.

Immunofluorescence analysis of HeLa cells, using Keratin 18 (Phospho-Ser52) Antibody. The picture on the right is blocked with the phospho peptide.



Western blot analysis of 3T3 293T using p-Cytokeratin 18 (S52) antibody. Antibody was diluted at 1:500

This product is suitable for in-vitro studies under the RESEARCH USE ONLY [RUO] licence. This product must not be used as for diagnostic or other medical purposes.  
St John's Laboratory Ltd, Knowledge Dock Business Centre, University Way, London, E16 2RD | Tel: 0208 223 3081