

Anti-Phospho-CD5-Tyr453 antibody (390-470) (STJ90704)

STJ90704

GENERAL INFORMATION

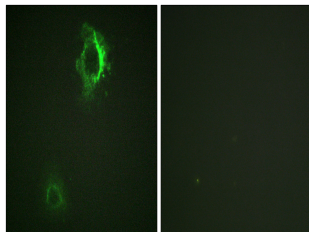
| | |
|--------------------------|--|
| Product Type | Primary antibodies |
| Short Description | Rabbit polyclonal antibody anti-Phospho-T-Cell Surface Glycoprotein Cd5-Tyr453 (390-470) is suitable for use in Western Blot, Immunohistochemistry, Immunofluorescence, Immunocytochemistry and ELISA research applications. |
| Applications | WB, IHC-P, IF, ICC, ELISA |
| Host/Source | Rabbit |
| Reactivity | Human, Mouse, Rat |

PRODUCT PROPERTIES

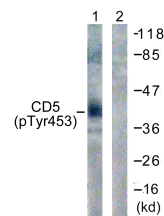
| | |
|----------------------------|--|
| Clonality | Polyclonal |
| Clone ID | |
| Concentration | 1 mg/mL |
| Conjugation | Unconjugated |
| Purification | The antibody was affinity-purified from rabbit anti-serum by affinity-chromatography. |
| Dilution Range | WB 1:500-1:2000 IHC 1:100-1:300 IF 1:200-1:1000 ELISA 1:20000 |
| Formulation | PBS, 50% Glycerol, 0.5% BSA and 0.02% Sodium Azide. |
| Isotype | IgG |
| Storage Instruction | Store at -20°C for up to 1 year from the date of receipt, and avoid repeat freeze-thaw cycles. |

TARGET INFORMATION

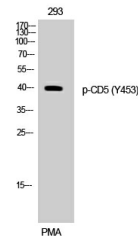
| | |
|---------------------------|---|
| Gene ID | 921 |
| Gene Symbol | CD5 |
| Uniprot ID | CD5_HUMAN |
| Immunogen | The antiserum was produced against synthesized peptide derived from human CD5 around the phosphorylation site of Tyr453 at amino acid range 421-470 |
| Immunogen Region | 390-470 |
| Specificity | Phospho-CD5-Tyr453 polyclonal antibody (T-Cell Surface Glycoprotein Cd5) binds to endogenous T-Cell Surface Glycoprotein Cd5 at the amino acid region 390-470 only when phosphorylated at Tyr453. |
| Immunogen Sequence | |



Immunofluorescence analysis of HepG2 cells, using CD5 (Phospho-Tyr453) Antibody. The picture on the right is blocked with the phospho peptide.



Western blot analysis of lysates from 293 cells treated with PMA 125ng/ml 30', using CD5 (Phospho-Tyr453) Antibody. The lane on the right is blocked with the phospho peptide.



Western blot analysis of 293 cells using Phospho-CD5 (Y453) Polyclonal Antibody

This product is suitable for in-vitro studies under the RESEARCH USE ONLY [RUO] licence. This product must not be used as for diagnostic or other medical purposes.
St John's Laboratory Ltd, Knowledge Dock Business Centre, University Way, London, E16 2RD | Tel: 0208 223 3081