

## Anti-Phospho-PTPRC-Ser1007 antibody (950-1030) (STJ90703)

STJ90703

### GENERAL INFORMATION

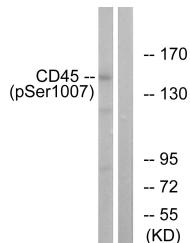
<b>Product Type</b>	Primary antibodies
<b>Short Description</b>	Rabbit polyclonal antibody anti-Phospho-Receptor-Type Tyrosine-Protein Phosphatase C-Ser1007 (950-1030) is suitable for use in Western Blot, Immunofluorescence, Immunocytochemistry and ELISA research applications.
<b>Applications</b>	WB, IF, ICC, ELISA
<b>Host/Source</b>	Rabbit
<b>Reactivity</b>	Human, Mouse, Rat

### PRODUCT PROPERTIES

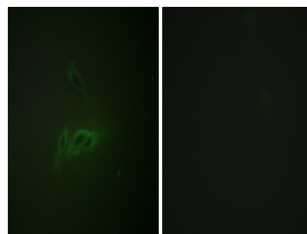
<b>Clonality</b>	Polyclonal
<b>Clone ID</b>	
<b>Concentration</b>	1 mg/mL
<b>Conjugation</b>	Unconjugated
<b>Purification</b>	The antibody was affinity-purified from rabbit anti-serum by affinity-chromatography.
<b>Dilution Range</b>	WB 1:500-1:2000 IF 1:200-1:1000 ELISA 1:5000
<b>Formulation</b>	PBS, 50% Glycerol, 0.5% BSA and 0.02% Sodium Azide.
<b>Isotype</b>	IgG
<b>Storage Instruction</b>	Store at -20°C for up to 1 year from the date of receipt, and avoid repeat freeze-thaw cycles.

### TARGET INFORMATION

<b>Gene ID</b>	5788
<b>Gene Symbol</b>	PTPRC
<b>Uniprot ID</b>	PTPRC_HUMAN
<b>Immunogen</b>	The antiserum was produced against synthesized peptide derived from human CD45 around the phosphorylation site of Ser1007 at amino acid range 981-1030
<b>Immunogen Region</b>	950-1030
<b>Specificity</b>	Phospho-PTPRC-Ser1007 polyclonal antibody (Receptor-Type Tyrosine-Protein Phosphatase C) binds to endogenous Receptor-Type Tyrosine-Protein Phosphatase C at the amino acid region 950-1030 only when phosphorylated at Ser1007.
<b>Immunogen Sequence</b>	



Western blot analysis of lysates from HeLa cells treated with TNF 20ng/ml 15', using CD45 (Phospho-Ser1007) Antibody. The lane on the right is blocked with the phospho peptide.



Immunofluorescence analysis of HeLa cells, using CD45 (Phospho-Ser1007) Antibody. The picture on the right is blocked with the phospho peptide.

This product is suitable for in-vitro studies under the RESEARCH USE ONLY [RUO] licence. This product must not be used as for diagnostic or other medical purposes.  
St John's Laboratory Ltd, Knowledge Dock Business Centre, University Way, London, E16 2RD | Tel: 0208 223 3081