

Anti-Phospho-RB1-Ser811 antibody (740-820) (STJ90699)

STJ90699

GENERAL INFORMATION

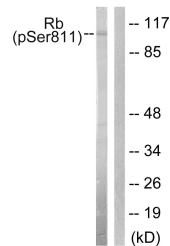
Product Type	Primary antibodies
Short Description	Rabbit polyclonal antibody anti-Phospho-Retinoblastoma-Associated Protein-Ser811 (740-820) is suitable for use in Western Blot, Immunohistochemistry, Immunofluorescence, Immunocytochemistry and ELISA research applications.
Applications	WB, IHC-P, IF, ICC, ELISA
Host/Source	Rabbit
Reactivity	Human, Mouse, Rat

PRODUCT PROPERTIES

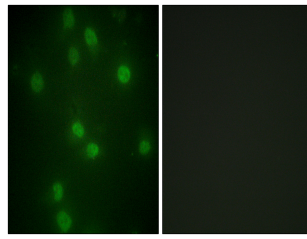
Clonality	Polyclonal
Clone ID	
Concentration	1 mg/mL
Conjugation	Unconjugated
Purification	The antibody was affinity-purified from rabbit anti-serum by affinity-chromatography.
Dilution Range	WB 1:500-1:2000 IHC 1:100-1:300 IF 1:200-1:1000 ELISA 1:10000
Formulation	PBS, 50% Glycerol, 0.5% BSA and 0.02% Sodium Azide.
Isotype	IgG
Storage Instruction	Store at -20°C for up to 1 year from the date of receipt, and avoid repeat freeze-thaw cycles.

TARGET INFORMATION

Gene ID	5925
Gene Symbol	RB1
Uniprot ID	RB_HUMAN
Immunogen	The antiserum was produced against synthesized peptide derived from human Retinoblastoma around the phosphorylation site of Ser811 at amino acid range 771-820
Immunogen Region	740-820
Specificity	Phospho-RB1-Ser811 polyclonal antibody (Retinoblastoma-Associated Protein) binds to endogenous Retinoblastoma-Associated Protein at the amino acid region 740-820 only when phosphorylated at Ser811.
Immunogen Sequence	



Western blot analysis of lysates from K562 cells, using Retinoblastoma (Phospho-Ser811) Antibody. The lane on the right is blocked with the phospho peptide.



Immunofluorescence analysis of HUVEC cells, using Retinoblastoma (Phospho-Ser811) Antibody. The picture on the right is blocked with the phospho peptide.