

Anti-Phospho-ATXN1-Ser776 antibody (720-800) (STJ90696)

STJ90696

GENERAL INFORMATION

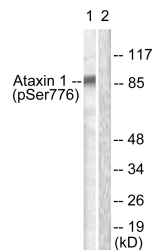
Product Type	Primary antibodies
Short Description	Rabbit polyclonal antibody anti-Phospho-Ataxin-1-Ser776 (720-800) is suitable for use in Western Blot, Immunohistochemistry, Immunofluorescence, Immunocytochemistry and ELISA research applications.
Applications	WB, IHC-P, IF, ICC, ELISA
Host/Source	Rabbit
Reactivity	Human, Mouse

PRODUCT PROPERTIES

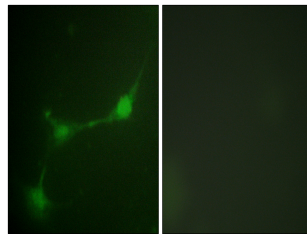
Clonality	Polyclonal
Clone ID	
Concentration	1 mg/mL
Conjugation	Unconjugated
Purification	The antibody was affinity-purified from rabbit anti-serum by affinity-chromatography.
Dilution Range	WB 1:500-1:2000 IHC 1:100-1:300 IF 1:200-1:1000 ELISA 1:10000
Formulation	PBS, 50% Glycerol, 0.5% BSA and 0.02% Sodium Azide.
Isotype	IgG
Storage Instruction	Store at -20°C for up to 1 year from the date of receipt, and avoid repeat freeze-thaw cycles.

TARGET INFORMATION

Gene ID	6310
Gene Symbol	ATXN1
Uniprot ID	ATX1_HUMAN
Immunogen	The antiserum was produced against synthesized peptide derived from human Ataxin 1 around the phosphorylation site of Ser776 at amino acid range 742-791
Immunogen Region	720-800
Specificity	Phospho-ATXN1-Ser776 polyclonal antibody (Ataxin-1) binds to endogenous Ataxin-1 at the amino acid region 720-800 only when phosphorylated at Ser776.
Immunogen Sequence	



Western blot analysis of lysates from HepG2 cells treated with Adriamycin 0.5µM 5h, using Ataxin 1 (Phospho-Ser776) Antibody. The lane on the right is blocked with the phospho peptide.



Immunofluorescence analysis of NIH/3T3 cells, using Ataxin 1 (Phospho-Ser776) Antibody. The picture on the right is blocked with the phospho peptide.