

Anti-Phospho-RPS6KA5-Thr581 antibody (520-600) (STJ90695)

STJ90695

GENERAL INFORMATION

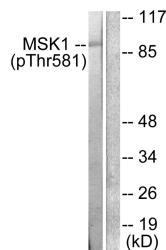
Product Type	Primary antibodies
Short Description	Rabbit polyclonal antibody anti-Phospho-Ribosomal Protein S6 Kinase Alpha-5-Thr581 (520-600) is suitable for use in Western Blot, Immunohistochemistry, Immunofluorescence, Immunocytochemistry and ELISA research applications.
Applications	WB, IHC-P, IF, ICC, ELISA
Host/Source	Rabbit
Reactivity	Human, Mouse

PRODUCT PROPERTIES

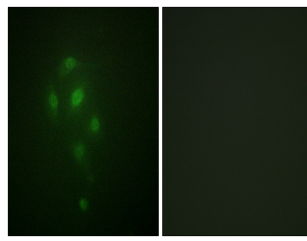
Clonality	Polyclonal
Clone ID	
Concentration	1 mg/mL
Conjugation	Unconjugated
Purification	The antibody was affinity-purified from rabbit anti-serum by affinity-chromatography.
Dilution Range	WB 1:500-1:2000 IHC 1:100-1:300 IF 1:200-1:1000 ELISA 1:40000
Formulation	PBS, 50% Glycerol, 0.5% BSA and 0.02% Sodium Azide.
Isotype	IgG
Storage Instruction	Store at -20°C for up to 1 year from the date of receipt, and avoid repeat freeze-thaw cycles.

TARGET INFORMATION

Gene ID	9252
Gene Symbol	RPS6KA5
Uniprot ID	KS6A5_HUMAN
Immunogen	The antiserum was produced against synthesized peptide derived from human MSK1 around the phosphorylation site of Thr581 at amino acid range 551-600
Immunogen Region	520-600
Specificity	Phospho-RPS6KA5-Thr581 polyclonal antibody (Ribosomal Protein S6 Kinase Alpha-5) binds to endogenous Ribosomal Protein S6 Kinase Alpha-5 at the amino acid region 520-600 only when phosphorylated at Thr581.
Immunogen Sequence	



Western blot analysis of lysates from RAW264.7 cells treated with UV 5', using MSK1 (Phospho-Thr581) Antibody. The lane on the right is blocked with the phospho peptide.



Immunofluorescence analysis of A549 cells, using MSK1 (Phospho-Thr581) Antibody. The picture on the right is blocked with the phospho peptide.