

## Anti-Phospho-NFATC3-Ser165 antibody (100-180) (STJ90689)

STJ90689

### GENERAL INFORMATION

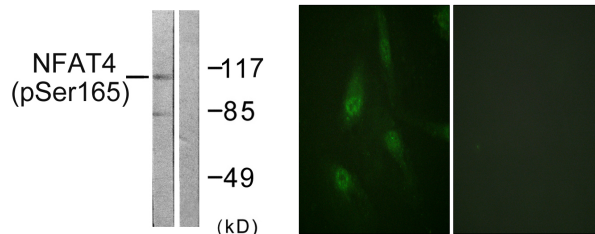
|                          |  |
|--------------------------|--|
| <b>Product Type</b>      | Primary antibodies   |
| <b>Short Description</b> | Rabbit polyclonal antibody anti-Phospho-Nuclear Factor Of Activated T-Cells-Cytoplasmic 3-Ser165 (100-180) is suitable for use in Western Blot, Immunohistochemistry, Immunofluorescence, Immunocytochemistry and ELISA research applications. |
| <b>Applications</b>      | WB, IHC-P, IF, ICC, ELISA  |
| <b>Host/Source</b>       | Rabbit   |
| <b>Reactivity</b>        | Human, Mouse   |

### PRODUCT PROPERTIES

|                            |  |
|----------------------------|--|
| <b>Clonality</b>           | Polyclonal   |
| <b>Clone ID</b>            |  |
| <b>Concentration</b>       | 1 mg/mL  |
| <b>Conjugation</b>         | Unconjugated   |
| <b>Purification</b>        | The antibody was affinity-purified from rabbit anti-serum by affinity-chromatography.          |
| <b>Dilution Range</b>      | WB 1:500-1:2000<br>IHC 1:100-1:300<br>IF 1:200-1:1000<br>ELISA 1:5000                          |
| <b>Formulation</b>         | PBS, 50% Glycerol, 0.5% BSA and 0.02% Sodium Azide.  |
| <b>Isotype</b>             | IgG  |
| <b>Storage Instruction</b> | Store at -20°C for up to 1 year from the date of receipt, and avoid repeat freeze-thaw cycles. |

### TARGET INFORMATION

|                           |  |
|---------------------------|--|
| <b>Gene ID</b>            | 4775   |
| <b>Gene Symbol</b>        | NFATC3   |
| <b>Uniprot ID</b>         | NFAC3_HUMAN  |
| <b>Immunogen</b>          | The antiserum was produced against synthesized peptide derived from human NFAT4 around the phosphorylation site of Ser165 at amino acid range 131-180  |
| <b>Immunogen Region</b>   | 100-180  |
| <b>Specificity</b>        | Phospho-NFATC3-Ser165 polyclonal antibody (Nuclear Factor Of Activated T-Cells-Cytoplasmic 3) binds to endogenous Nuclear Factor Of Activated T-Cells-Cytoplasmic 3 at the amino acid region 100-180 only when phosphorylated at Ser165. |
| <b>Immunogen Sequence</b> |  |



Western blot analysis of lysates from HeLa cells treated with Ca<sup>+</sup> 40nM 30', using NFAT4 (Phospho-Ser165) Antibody. The lane on the right is blocked with the phospho peptide.

Immunofluorescence analysis of HeLa cells, using NFAT4 (Phospho-Ser165) Antibody. The picture on the right is blocked with the phospho peptide.

This product is suitable for in-vitro studies under the RESEARCH USE ONLY [RUO] licence. This product must not be used as for diagnostic or other medical purposes.  
St John's Laboratory Ltd, Knowledge Dock Business Centre, University Way, London, E16 2RD | Tel: 0208 223 3081