

Anti-Phospho-FGFR1-Tyr654 antibody (600-680) (STJ90688)

STJ90688

GENERAL INFORMATION

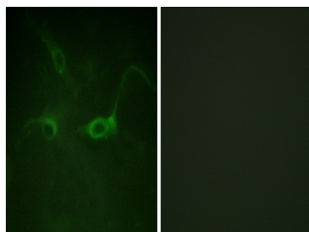
Product Type	Primary antibodies
Short Description	Rabbit polyclonal antibody anti-Phospho-Fibroblast Growth Factor Receptor 1-Tyr654 (600-680) is suitable for use in Western Blot, Immunofluorescence, Immunocytochemistry and ELISA research applications.
Applications	WB, IF, ICC, ELISA
Host/Source	Rabbit
Reactivity	Human, Mouse, Rat

PRODUCT PROPERTIES

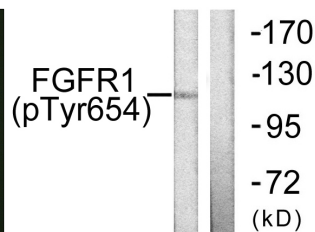
Clonality	Polyclonal
Clone ID	
Concentration	1 mg/mL
Conjugation	Unconjugated
Purification	The antibody was affinity-purified from rabbit anti-serum by affinity-chromatography.
Dilution Range	WB 1:500-1:2000 IF 1:200-1:1000 ELISA 1:20000
Formulation	PBS, 50% Glycerol, 0.5% BSA and 0.02% Sodium Azide.
Isotype	IgG
Storage Instruction	Store at 20°C for up to 1 year from the date of receipt, and avoid repeat freeze-thaw cycles.

TARGET INFORMATION

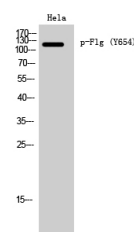
Gene ID	2260
Gene Symbol	FGFR1
Uniprot ID	FGFR1_HUMAN
Immunogen	The antiserum was produced against synthesized peptide derived from human FGFR1 around the phosphorylation site of Tyr654 at amino acid range 626-675
Immunogen Region	600-680
Specificity	Phospho-FGFR1-Tyr654 polyclonal antibody (Fibroblast Growth Factor Receptor 1) binds to endogenous Fibroblast Growth Factor Receptor 1 at the amino acid region 600-680 only when phosphorylated at Tyr654.
Immunogen Sequence	



Immunofluorescence analysis of COS7 cells, using FGFR1 (Phospho-Tyr654) Antibody. The picture on the right is blocked with the phospho peptide.



Western blot analysis of lysates from 293 cells treated with Insulin 0.01U/ml 15', using FGFR1 (Phospho-Tyr654) Antibody. The lane on the right is blocked with the phospho peptide.



Western blot analysis of HeLa cells using Phospho-Fig (Y654) Polyclonal Antibody diluted at 1: 1000

This product is suitable for in-vitro studies under the RESEARCH USE ONLY [RUO] licence. This product must not be used as for diagnostic or other medical purposes.
St John's Laboratory Ltd, Knowledge Dock Business Centre, University Way, London, E16 2RD | Tel: 0208 223 3081