

Anti-Phospho-CRK-Tyr221 antibody (160-240) (STJ90687)

STJ90687

GENERAL INFORMATION

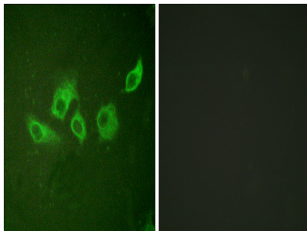
Product Type	Primary antibodies
Short Description	Rabbit polyclonal antibody anti-Phospho-Adapter Molecule Crk-Tyr221 (160-240) is suitable for use in Western Blot, Immunofluorescence, Immunocytochemistry and ELISA research applications.
Applications	WB, IF, ICC, ELISA
Host/Source	Rabbit
Reactivity	Human, Mouse, Rat, Monkey

PRODUCT PROPERTIES

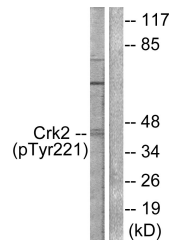
Clonality	Polyclonal
Clone ID	
Concentration	1 mg/mL
Conjugation	Unconjugated
Purification	The antibody was affinity-purified from rabbit anti-serum by affinity-chromatography.
Dilution Range	WB 1:500-1:2000 IF 1:200-1:1000 ELISA 1:40000
Formulation	PBS, 50% Glycerol, 0.5% BSA and 0.02% Sodium Azide.
Isotype	IgG
Storage Instruction	Store at -20°C for up to 1 year from the date of receipt, and avoid repeat freeze-thaw cycles.

TARGET INFORMATION

Gene ID	1398
Gene Symbol	CRK
Uniprot ID	CRK_HUMAN
Immunogen	The antiserum was produced against synthesized peptide derived from human CrkII around the phosphorylation site of Tyr221 at amino acid range 187-236
Immunogen Region	160-240
Specificity	Phospho-CRK-Tyr221 polyclonal antibody (Adapter Molecule Crk) binds to endogenous Adapter Molecule Crk at the amino acid region 160-240 only when phosphorylated at Tyr221.
Immunogen Sequence	



Immunofluorescence analysis of HUVEC cells, using CrkII (Phospho-Tyr221) Antibody. The picture on the right is blocked with the phospho peptide.



Western blot analysis of lysates from COS7 cells, using CrkII (Phospho-Tyr221) Antibody. The lane on the right is blocked with the phospho peptide.



Western blot analysis of various cells using Phospho-Crk II (Y221) Polyclonal Antibody

This product is suitable for in-vitro studies under the RESEARCH USE ONLY [RUO] licence. This product must not be used as for diagnostic or other medical purposes.
St John's Laboratory Ltd, Knowledge Dock Business Centre, University Way, London, E16 2RD | Tel: 0208 223 3081