

## Anti-Phospho-EGFR-Thr678 antibody (620-700) (STJ90686)

STJ90686

### GENERAL INFORMATION

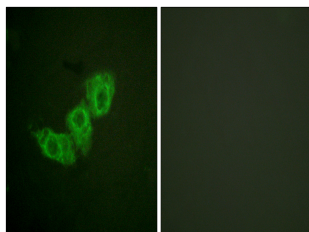
<b>Product Type</b>	Primary antibodies
<b>Short Description</b>	Rabbit polyclonal antibody anti-Phospho-Epidermal Growth Factor Receptor-Thr678 (620-700) is suitable for use in Western Blot, Immunofluorescence, Immunocytochemistry and ELISA research applications.
<b>Applications</b>	WB, IF, ICC, ELISA
<b>Host/Source</b>	Rabbit
<b>Reactivity</b>	Human, Mouse, Rat, Monkey

### PRODUCT PROPERTIES

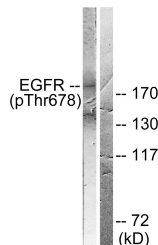
<b>Clonality</b>	Polyclonal
<b>Clone ID</b>	
<b>Concentration</b>	1 mg/mL
<b>Conjugation</b>	Unconjugated
<b>Purification</b>	The antibody was affinity-purified from rabbit anti-serum by affinity-chromatography.
<b>Dilution</b>	WB 1:500-1:2000
<b>Range</b>	IF 1:200-1:1000 ELISA 1:40000
<b>Formulation</b>	PBS, 50% Glycerol, 0.5% BSA and 0.02% Sodium Azide.
<b>Isotype</b>	IgG
<b>Storage Instruction</b>	Store at -20°C for up to 1 year from the date of receipt, and avoid repeat freeze-thaw cycles.

### TARGET INFORMATION

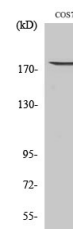
<b>Gene ID</b>	1956
<b>Gene Symbol</b>	EGFR
<b>Uniprot ID</b>	EGFR_HUMAN
<b>Immunogen</b>	The antiserum was produced against synthesized peptide derived from human EGFR around the phosphorylation site of Thr678 at amino acid range 651-700
<b>Immunogen Region</b>	620-700
<b>Specificity</b>	Phospho-EGFR-Thr678 polyclonal antibody (Epidermal Growth Factor Receptor) binds to endogenous Epidermal Growth Factor Receptor at the amino acid region 620-700 only when phosphorylated at Thr678.
<b>Immunogen Sequence</b>	



Immunofluorescence analysis of HUVEC cells, using EGFR (Phospho-Thr678) Antibody. The picture on the right is blocked with the phospho peptide.



Western blot analysis of lysates from COS7 cells treated with EGF 200ng/ml 30', using EGFR (Phospho-Thr678) Antibody. The lane on the right is blocked with the phospho peptide.



Western blot analysis of various cells using Phospho-EGFR (T678) Polyclonal Antibody diluted at 1:1000