

Anti-Phospho-SNCA-Tyr136 antibody (60-140) (STJ90681)

STJ90681

GENERAL INFORMATION

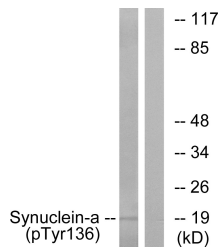
Product Type	Primary antibodies
Short Description	Rabbit polyclonal antibody anti-Phospho-Alpha-Synuclein-Tyr136 (60-140) is suitable for use in Western Blot and ELISA research applications.
Applications	WB, ELISA
Host/Source	Rabbit
Reactivity	Human, Mouse, Rat

PRODUCT PROPERTIES

Clonality	Polyclonal
Clone ID	
Concentration	1 mg/mL
Conjugation	Unconjugated
Purification	The antibody was affinity-purified from rabbit anti-serum by affinity-chromatography.
Dilution Range	WB 1:500-1:2000 ELISA 1:5000
Formulation	PBS, 50% Glycerol, 0.5% BSA and 0.02% Sodium Azide.
Isotype	IgG
Storage Instruction	Store at -20°C for up to 1 year from the date of receipt, and avoid repeat freeze-thaw cycles.

TARGET INFORMATION

Gene ID	6622
Gene Symbol	SNCA
Uniprot ID	SYUA_HUMAN
Immunogen	The antiserum was produced against synthesized peptide derived from human Synuclein-alpha around the phosphorylation site of Tyr136 at amino acid range 91-140
Immunogen Region	60-140
Specificity	Phospho-SNCA-Tyr136 polyclonal antibody (Alpha-Synuclein) binds to endogenous Alpha-Synuclein at the amino acid region 60-140 only when phosphorylated at Tyr136.
Immunogen Sequence	



Western blot analysis of lysates from mouse brain, using Synuclein-alpha (Phospho-Tyr136) Antibody. The lane on the right is blocked with the phospho peptide.