

Anti-Phospho-RAF1-Ser338 antibody (280-360) (STJ90676)

STJ90676

GENERAL INFORMATION

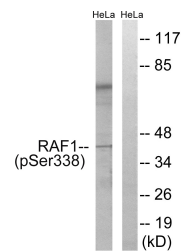
Product Type	Primary antibodies
Short Description	Rabbit polyclonal antibody anti-Phospho-Raf Proto-Oncogene Serine/Threonine-Protein Kinase-Ser338 (280-360) is suitable for use in Western Blot and ELISA research applications.
Applications	WB, ELISA
Host/Source	Rabbit
Reactivity	Human, Mouse, Rat

PRODUCT PROPERTIES

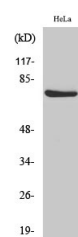
Clonality	Polyclonal
Clone ID	
Concentration	1 mg/mL
Conjugation	Unconjugated
Purification	The antibody was affinity-purified from rabbit anti-serum by affinity-chromatography.
Dilution	WB 1:500-1:2000
Range	ELISA 1:40000
Formulation	PBS, 50% Glycerol, 0.5% BSA and 0.02% Sodium Azide.
Isotype	IgG
Storage	Store at 20°C for up to 1 year from the date of receipt, and avoid repeat freeze-thaw cycles.
Instruction	

TARGET INFORMATION

Gene ID	5894
Gene Symbol	RAF1
Uniprot ID	RAF1_HUMAN
Immunogen	The antiserum was produced against synthesized peptide derived from human C-RAF around the phosphorylation site of Ser338 at amino acid range 305-354
Immunogen Region	280-360
Specificity	Phospho-RAF1-Ser338 polyclonal antibody (Raf Proto-Oncogene Serine/Threonine-Protein Kinase) binds to endogenous Raf Proto-Oncogene Serine/Threonine-Protein Kinase at the amino acid region 280-360 only when phosphorylated at Ser338.
Immunogen Sequence	



Western blot analysis of lysates from HeLa cells treated with paclitaxel 1uM 24h, using C-RAF (Phospho-Ser338) Antibody. The lane on the right is blocked with the phospho peptide.



Western blot analysis of various cells using Phospho-Raf-1 (S338) Polyclonal Antibody

This product is suitable for in-vitro studies under the RESEARCH USE ONLY [RUO] licence. This product must not be used as for diagnostic or other medical purposes.
 St John's Laboratory Ltd, Knowledge Dock Business Centre, University Way, London, E16 2RD | Tel: 0208 223 3081