

Anti-Phospho-NOS3-Ser1177 antibody (1110-1190) (STJ90674)

STJ90674

GENERAL INFORMATION

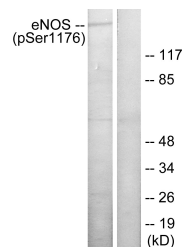
Product Type	Primary antibodies
Short Description	Rabbit polyclonal antibody anti-Phospho-Nitric Oxide Synthase-Endothelial-Ser1177 (1110-1190) is suitable for use in Western Blot, Immunofluorescence, Immunocytochemistry and ELISA research applications.
Applications	WB, IF, ICC, ELISA
Host/Source	Rabbit
Reactivity	Human, Mouse, Rat

PRODUCT PROPERTIES

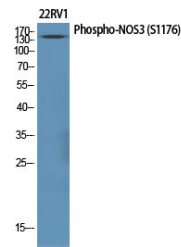
Clonality	Polyclonal
Clone ID	
Concentration	1 mg/mL
Conjugation	Unconjugated
Purification	The antibody was affinity-purified from rabbit anti-serum by affinity-chromatography.
Dilution Range	WB 1:500-1:2000 IF 1:200-1:1000 ELISA 1:20000
Formulation	PBS, 50% Glycerol, 0.5% BSA and 0.02% Sodium Azide.
Isotype	IgG
Storage Instruction	Store at -20°C for up to 1 year from the date of receipt, and avoid repeat freeze-thaw cycles.

TARGET INFORMATION

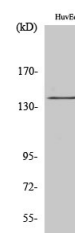
Gene ID	4846
Gene Symbol	NOS3
Uniprot ID	NOS3_HUMAN
Immunogen	The antiserum was produced against synthesized peptide derived from human eNOS around the phosphorylation site of Ser1176 at amino acid range 1144-1193
Immunogen Region	1110-1190
Specificity	Phospho-NOS3-Ser1177 polyclonal antibody (Nitric Oxide Synthase-Endothelial) binds to endogenous Nitric Oxide Synthase-Endothelial at the amino acid region 1110-1190 only when phosphorylated at Ser1177.
Immunogen Sequence	



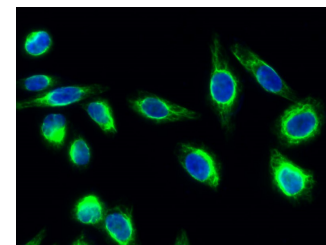
Western blot analysis of lysates from HeLa cells treated with insulin 0.01 U/ml 15', using eNOS (Phospho-Ser1176) Antibody. The lane on the right is blocked with the phospho peptide.



Western blot analysis of various cells using Phospho-NOS3 (S1177) Polyclonal Antibody diluted at 1: 1000



Western blot analysis of HuvEc cells using Phospho-NOS3 (S1177) Polyclonal Antibody diluted at 1: 1000



Immunofluorescence analysis of HeLa cell. 1, NOS3 (phospho Ser1177) Polyclonal Antibody (green) was diluted at 1:200 (4°C overnight). 2, Goat Anti Rabbit Alexa Fluor 488 Catalog: (NA was diluted at 1:1000 (room temperature, 50min). 3 DAPI (blue) 10min.

This product is suitable for in-vitro studies under the RESEARCH USE ONLY [RUO] licence. This product must not be used as for diagnostic or other medical purposes.
St John's Laboratory Ltd, Knowledge Dock Business Centre, University Way, London, E16 2RD | Tel: 0208 223 3081