

## Anti-Phospho-ANXA2-Ser26 antibody (1-80) (STJ90671)

STJ90671

### GENERAL INFORMATION

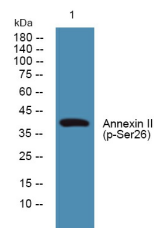
|                          |  |
|--------------------------|--|
| <b>Product Type</b>      | Primary antibodies   |
| <b>Short Description</b> | Rabbit polyclonal antibody anti-Phospho-Annexin A2-Ser26 (1-80) is suitable for use in Western Blot and ELISA research applications. |
| <b>Applications</b>      | WB, ELISA  |
| <b>Host/Source</b>       | Rabbit   |
| <b>Reactivity</b>        | Human, Mouse, Rat  |

### PRODUCT PROPERTIES

|                            |  |
|----------------------------|--|
| <b>Clonality</b>           | Polyclonal   |
| <b>Clone ID</b>            |  |
| <b>Concentration</b>       | 1 mg/mL  |
| <b>Conjugation</b>         | Unconjugated   |
| <b>Purification</b>        | The antibody was affinity-purified from rabbit anti-serum by affinity-chromatography.          |
| <b>Dilution Range</b>      | WB 1:500-1:2000<br>ELISA 1:10000   |
| <b>Formulation</b>         | PBS, 50% Glycerol, 0.5% BSA and 0.02% Sodium Azide.  |
| <b>Isotype</b>             | IgG  |
| <b>Storage Instruction</b> | Store at -20°C for up to 1 year from the date of receipt, and avoid repeat freeze-thaw cycles. |

### TARGET INFORMATION

|                           |  |
|---------------------------|--|
| <b>Gene ID</b>            | 302  |
| <b>Gene Symbol</b>        | ANXA2  |
| <b>Uniprot ID</b>         | ANXA2_HUMAN  |
| <b>Immunogen</b>          | Synthesized phospho-peptide around the phosphorylation site of human Annexin II (phospho Ser26)  |
| <b>Immunogen Region</b>   | 1-80   |
| <b>Specificity</b>        | Phospho-ANXA2-Ser26 polyclonal antibody (Annexin A2) binds to endogenous Annexin A2 at the amino acid region 1-80 only when phosphorylated at Ser26. |
| <b>Immunogen Sequence</b> |  |



Western blot analysis of lysates from SH-SY5Y cells, primary antibody was diluted at 1:1000, 4°C over night

This product is suitable for in-vitro studies under the RESEARCH USE ONLY [RUO] licence. This product must not be used as for diagnostic or other medical purposes.  
St John's Laboratory Ltd, Knowledge Dock Business Centre, University Way, London, E16 2RD | Tel: 0208 223 3081