

Anti-Phospho-EPHA7-Tyr791 antibody (730-810) (STJ90668)

STJ90668

GENERAL INFORMATION

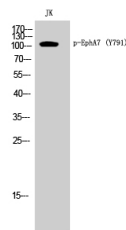
Product Type	Primary antibodies
Short Description	Rabbit polyclonal antibody anti-Phospho-Ephrin Type-A Receptor 7-Tyr791 (730-810) is suitable for use in Western Blot and ELISA research applications.
Applications	WB, ELISA
Host/Source	Rabbit
Reactivity	Human, Mouse, Rat

PRODUCT PROPERTIES

Clonality	Polyclonal
Clone ID	
Concentration	1 mg/mL
Conjugation	Unconjugated
Purification	The antibody was affinity-purified from rabbit anti-serum by affinity-chromatography.
Dilution Range	WB 1:500-1:2000 ELISA 1:10000
Formulation	PBS, 50% Glycerol, 0.5% BSA and 0.02% Sodium Azide.
Isotype	IgG
Storage	Store at -20°C for up to 1 year from the date of receipt, and avoid repeat freeze-thaw cycles.
Instruction	

TARGET INFORMATION

Gene ID	2045
Gene Symbol	EPHA7
Uniprot ID	EPHA7_HUMAN
Immunogen	Synthesized phospho-peptide around the phosphorylation site of human EphA7 (phospho Tyr791)
Immunogen Region	730-810
Specificity	Phospho-EPHA7-Tyr791 polyclonal antibody (Ephrin Type-A Receptor 7) binds to endogenous Ephrin Type-A Receptor 7 at the amino acid region 730-810 only when phosphorylated at Tyr791.
Immunogen Sequence	



Western blot analysis of JK cells using Phospho-EphA7 (Y791) Polyclonal Antibody

This product is suitable for in-vitro studies under the RESEARCH USE ONLY [RUO] licence. This product must not be used as for diagnostic or other medical purposes.
St John's Laboratory Ltd, Knowledge Dock Business Centre, University Way, London, E16 2RD | Tel: 0208 223 3081