

Anti-Phospho-EphA2/5-Tyr594 antibody (530-610) (STJ90666)

STJ90666

GENERAL INFORMATION

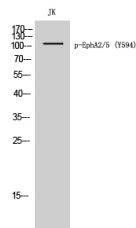
Product Type	Primary antibodies
Short Description	Rabbit polyclonal antibody anti-Phospho-Ephrin type-A receptor 2 and Ephrin type-A receptor 5-Tyr594 (530-610) is suitable for use in Western Blot and ELISA research applications.
Applications	WB, ELISA
Host/Source	Rabbit
Reactivity	Human, Mouse

PRODUCT PROPERTIES

Clonality	Polyclonal
Clone ID	
Concentration	1 mg/mL
Conjugation	Unconjugated
Purification	The antibody was affinity-purified from rabbit anti-serum by affinity-chromatography.
Dilution	WB 1:500-1:2000
Range	ELISA 1:10000
Formulation	PBS, 50% Glycerol, 0.5% BSA and 0.02% Sodium Azide.
Isotype	IgG
Storage Instruction	Store at -20°C for up to 1 year from the date of receipt, and avoid repeat freeze-thaw cycles.

TARGET INFORMATION

Gene ID	2044 1969
Gene Symbol	EPHA5 EPHA2
Uniprot ID	EPHA5_HUMAN EPHA2_HUMAN
Immunogen Region	Synthesized phospho-peptide around the phosphorylation site of human EphA2/5 (phospho Tyr594) 530-610
Specificity	Phospho-EphA2/5-Tyr594 polyclonal antibody (Ephrin type-A receptor 2 and Ephrin type-A receptor 5) binds to endogenous Ephrin type-A receptor 2 and Ephrin type-A receptor 5 at the amino acid region 530-610 only when phosphorylated at Tyr594.
Immunogen Sequence	



Western blot analysis of JK cells using Phospho-EphA2/5 (Y594) Polyclonal Antibody

This product is suitable for in-vitro studies under the RESEARCH USE ONLY [RUO] licence. This product must not be used as for diagnostic or other medical purposes.
St John's Laboratory Ltd, Knowledge Dock Business Centre, University Way, London, E16 2RD | Tel: 0208 223 3081