

Anti-Phospho-TPH2-Ser19 antibody (1-80) (STJ90661)

STJ90661

GENERAL INFORMATION

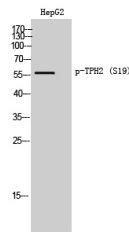
Product Type	Primary antibodies
Short Description	Rabbit polyclonal antibody anti-Phospho-Tryptophan 5-Hydroxylase 2-Ser19 (1-80) is suitable for use in Western Blot and ELISA research applications.
Applications	WB, ELISA
Host/Source	Rabbit
Reactivity	Human, Mouse, Rat

PRODUCT PROPERTIES

Clonality	Polyclonal
Clone ID	
Concentration	1 mg/mL
Conjugation	Unconjugated
Purification	The antibody was affinity-purified from rabbit anti-serum by affinity-chromatography.
Dilution Range	WB 1:500-1:2000 ELISA 1:40000
Formulation	PBS, 50% Glycerol, 0.5% BSA and 0.02% Sodium Azide.
Isotype	IgG
Storage Instruction	Store at -20°C for up to 1 year from the date of receipt, and avoid repeat freeze-thaw cycles.

TARGET INFORMATION

Gene ID	121278
Gene Symbol	TPH2
Uniprot ID	TPH2_HUMAN
Immunogen	Synthesized phospho-peptide around the phosphorylation site of human TPH2 (phospho Ser19)
Immunogen Region	1-80
Specificity	Phospho-TPH2-Ser19 polyclonal antibody (Tryptophan 5-Hydroxylase 2) binds to endogenous Tryptophan 5-Hydroxylase 2 at the amino acid region 1-80 only when phosphorylated at Ser19.
Immunogen Sequence	



Western blot analysis of HepG2 cells using Phospho-TPH2 (S19) Polyclonal Antibody

This product is suitable for in-vitro studies under the RESEARCH USE ONLY [RUO] licence. This product must not be used as for diagnostic or other medical purposes.
St John's Laboratory Ltd, Knowledge Dock Business Centre, University Way, London, E16 2RD | Tel: 0208 223 3081