

Anti-Phospho-GRIN2B-Ser1303 antibody (1240-1320) (STJ90653)

STJ90653

GENERAL INFORMATION

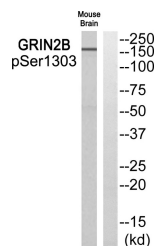
Product Type	Primary antibodies
Short Description	Rabbit polyclonal antibody anti-Phospho-Glutamate Receptor Ionotropic-Nmda 2b-Ser1303 (1240-1320) is suitable for use in Western Blot and ELISA research applications.
Applications	WB, ELISA
Host/Source	Rabbit
Reactivity	Human, Mouse, Rat

PRODUCT PROPERTIES

Clonality	Polyclonal
Clone ID	
Concentration	1 mg/mL
Conjugation	Unconjugated
Purification	The antibody was affinity-purified from rabbit anti-serum by affinity-chromatography.
Dilution	WB 1:500-1:2000
Range	ELISA 1:40000
Formulation	PBS, 50% Glycerol, 0.5% BSA and 0.02% Sodium Azide.
Isotype	IgG
Storage	Store at -20°C for up to 1 year from the date of receipt, and avoid repeat freeze-thaw cycles.
Instruction	

TARGET INFORMATION

Gene ID	2904
Gene Symbol	GRIN2B
Uniprot ID	NMDE2_HUMAN
Immunogen	The antiserum was produced against synthesized peptide derived from human GRIN2B around the phosphorylation site of Ser1303 at amino acid range 1269-1318
Immunogen Region	1240-1320
Specificity	Phospho-GRIN2B-Ser1303 polyclonal antibody (Glutamate Receptor Ionotropic-Nmda 2b) binds to endogenous Glutamate Receptor Ionotropic-Nmda 2b at the amino acid region 1240-1320 only when phosphorylated at Ser1303.
Immunogen Sequence	



Western blot analysis of GRIN2B (Phospho-Ser1303) Antibody. The lane on the right is blocked with the GRIN2B (Phospho-Ser1303) peptide.