

Anti-Phospho-Bcl-2-Ser70 antibody (10-90) (STJ90652)

STJ90652

GENERAL INFORMATION

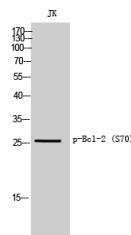
Product Type	Primary antibodies
Short Description	Rabbit polyclonal antibody anti-Phospho-BCL2-Ser70 (10-90) is suitable for use in Western Blot and ELISA research applications.
Applications	WB, ELISA
Host/Source	Rabbit
Reactivity	Mouse, Rat

PRODUCT PROPERTIES

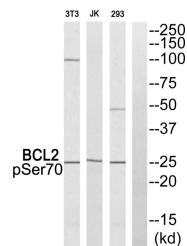
Clonality	Polyclonal
Clone ID	
Concentration	1 mg/mL
Conjugation	Unconjugated
Purification	The antibody was affinity-purified from rabbit anti-serum by affinity-chromatography.
Dilution Range	WB 1:500-1:2000 ELISA 1:40000
Formulation	PBS, 50% Glycerol, 0.5% BSA and 0.02% Sodium Azide.
Isotype	IgG
Storage Instruction	Store at -20°C for up to 1 year from the date of receipt, and avoid repeat freeze-thaw cycles.

TARGET INFORMATION

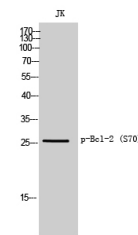
Gene ID	
Gene Symbol	
Uniprot ID	
Immunogen	The antiserum was produced against synthesized peptide derived from human BCL2 around the phosphorylation site of Ser70 at amino acid range 36-85
Immunogen Region	10-90
Specificity	Phospho-Bcl-2-Ser70 polyclonal antibody (BCL2) binds to endogenous BCL2 at the amino acid region 10-90 only when phosphorylated at Ser70.
Immunogen Sequence	



Western blot analysis of Jurkat cells using Phospho-Bcl-2 (S70) Polyclonal Antibody



Western blot analysis of BCL2 (Phospho-Ser70) Antibody. The lane on the right is blocked with the BCL2 (Phospho-Ser70) peptide.



Western blot analysis of JK cells using Phospho-Bcl-2 (S70) Polyclonal Antibody

This product is suitable for in-vitro studies under the RESEARCH USE ONLY [RUO] licence. This product must not be used as for diagnostic or other medical purposes.
St John's Laboratory Ltd, Knowledge Dock Business Centre, University Way, London, E16 2RD | Tel: 0208 223 3081