

Anti-Phospho-YBX1-Ser102 antibody (40-120) (STJ90649)

STJ90649

GENERAL INFORMATION

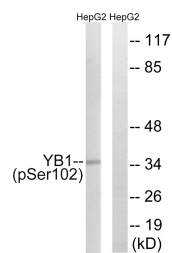
Product Type	Primary antibodies
Short Description	Rabbit polyclonal antibody anti-Phospho-Y-Box-Binding Protein 1-Ser102 (40-120) is suitable for use in Western Blot and ELISA research applications.
Applications	WB, ELISA
Host/Source	Rabbit
Reactivity	Human, Mouse, Rat

PRODUCT PROPERTIES

Clonality	Polyclonal
Clone ID	
Concentration	1 mg/mL
Conjugation	Unconjugated
Purification	The antibody was affinity-purified from rabbit anti-serum by affinity-chromatography.
Dilution Range	WB 1:500-1:2000 ELISA 1:40000
Formulation	PBS, 50% Glycerol, 0.5% BSA and 0.02% Sodium Azide.
Isotype	IgG
Storage Instruction	Store at -20°C for up to 1 year from the date of receipt, and avoid repeat freeze-thaw cycles.

TARGET INFORMATION

Gene ID	4904
Gene Symbol	YBX1
Uniprot ID	YBOX1_HUMAN
Immunogen	The antiserum was produced against synthesized peptide derived from human YB1 around the phosphorylation site of Ser102 at amino acid range 68-117
Immunogen Region	40-120
Specificity	Phospho-YBX1-Ser102 polyclonal antibody (Y-Box-Binding Protein 1) binds to endogenous Y-Box-Binding Protein 1 at the amino acid region 40-120 only when phosphorylated at Ser102.
Immunogen Sequence	



Western blot analysis of lysates from HepG2 cells treated with PMA 125ng/ml 15', using YB1 (Phospho-Ser102) Antibody. The lane on the right is blocked with the phospho peptide.