

Anti-Phospho-HCLS1-Tyr397 antibody (340-420) (STJ90644)

STJ90644

GENERAL INFORMATION

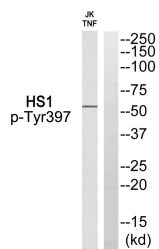
Product Type	Primary antibodies
Short Description	Rabbit polyclonal antibody anti-Phospho-Hematopoietic Lineage Cell-Specific Protein-Tyr397 (340-420) is suitable for use in Western Blot and ELISA research applications.
Applications	WB, ELISA
Host/Source	Rabbit
Reactivity	Human, Rat, Mouse

PRODUCT PROPERTIES

Clonality	Polyclonal
Clone ID	
Concentration	1 mg/mL
Conjugation	Unconjugated
Purification	The antibody was affinity-purified from rabbit anti-serum by affinity-chromatography.
Dilution	WB 1:500-1:2000
Range	ELISA 1:10000
Formulation	PBS, 50% Glycerol, 0.5% BSA and 0.02% Sodium Azide.
Isotype	IgG
Storage	Store at -20°C for up to 1 year from the date of receipt, and avoid repeat freeze-thaw cycles.
Instruction	

TARGET INFORMATION

Gene ID	3059
Gene Symbol	HCLS1
Uniprot ID	HCLS1_HUMAN
Immunogen	The antiserum was produced against synthesized peptide derived from human HS1 around the phosphorylation site of Tyr397 at amino acid range 366-415
Immunogen Region	340-420
Specificity	Phospho-HCLS1-Tyr397 polyclonal antibody (Hematopoietic Lineage Cell-Specific Protein) binds to endogenous Hematopoietic Lineage Cell-Specific Protein at the amino acid region 340-420 only when phosphorylated at Tyr397.
Immunogen Sequence	



Western blot analysis of HS1 (Phospho-Tyr397) Antibody. The lane on the right is blocked with the HS1 (Phospho-Tyr397) peptide.

This product is suitable for in-vitro studies under the RESEARCH USE ONLY [RUO] licence. This product must not be used as for diagnostic or other medical purposes.
 St John's Laboratory Ltd, Knowledge Dock Business Centre, University Way, London, E16 2RD | Tel: 0208 223 3081