

## Anti-Phospho-ZYX-Ser142 antibody (80-160) (STJ90641)

STJ90641

### GENERAL INFORMATION

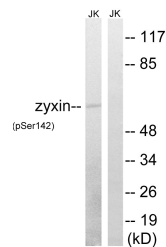
<b>Product Type</b>	Primary antibodies
<b>Short Description</b>	Rabbit polyclonal antibody anti-Phospho-Zyxin-Ser142 (80-160) is suitable for use in Western Blot and ELISA research applications.
<b>Applications</b>	WB, ELISA
<b>Host/Source</b>	Rabbit
<b>Reactivity</b>	Human, Rat, Mouse

### PRODUCT PROPERTIES

<b>Clonality</b>	Polyclonal
<b>Clone ID</b>	
<b>Concentration</b>	1 mg/mL
<b>Conjugation</b>	Unconjugated
<b>Purification</b>	The antibody was affinity-purified from rabbit anti-serum by affinity-chromatography.
<b>Dilution Range</b>	WB 1:500-1:2000 ELISA 1:5000
<b>Formulation</b>	PBS, 50% Glycerol, 0.5% BSA and 0.02% Sodium Azide.
<b>Isotype</b>	IgG
<b>Storage</b>	Store at -20°C for up to 1 year from the date of receipt, and avoid repeat freeze-thaw cycles.
<b>Instruction</b>	

### TARGET INFORMATION

<b>Gene ID</b>	7791
<b>Gene Symbol</b>	ZYX
<b>Uniprot ID</b>	ZYX_HUMAN
<b>Immunogen</b>	The antiserum was produced against synthesized peptide derived from human Zyxin around the phosphorylation site of Ser142 at amino acid range 108-157
<b>Immunogen Region</b>	80-160
<b>Specificity</b>	Phospho-ZYX-Ser142 polyclonal antibody (Zyxin) binds to endogenous Zyxin at the amino acid region 80-160 only when phosphorylated at Ser142.
<b>Immunogen Sequence</b>	



Western blot analysis of lysates from Jurkat cells treated with paclitaxel 1uM 24h, using Zyxin (Phospho-Ser142) Antibody. The lane on the right is blocked with the phospho peptide.