

Anti-Phospho-VCP-Ser352 antibody (290-370) (STJ90640)

STJ90640

GENERAL INFORMATION

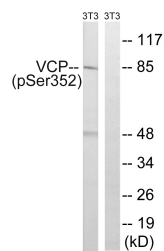
Product Type	Primary antibodies
Short Description	Rabbit polyclonal antibody anti-Phospho-Transitional Endoplasmic Reticulum Atpase-Ser352 (290-370) is suitable for use in Western Blot and ELISA research applications.
Applications	WB, ELISA
Host/Source	Rabbit
Reactivity	Human, Mouse, Rat

PRODUCT PROPERTIES

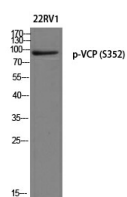
Clonality	Polyclonal
Clone ID	
Concentration	1 mg/mL
Conjugation	Unconjugated
Purification	The antibody was affinity-purified from rabbit anti-serum by affinity-chromatography.
Dilution	WB 1:500-1:2000
Range	ELISA 1:5000
Formulation	PBS, 50% Glycerol, 0.5% BSA and 0.02% Sodium Azide.
Isotype	IgG
Storage	Store at -20°C for up to 1 year from the date of receipt, and avoid repeat freeze-thaw cycles.
Instruction	

TARGET INFORMATION

Gene ID	7415
Gene Symbol	VCP
Uniprot ID	TERA_HUMAN
Immunogen	The antiserum was produced against synthesized peptide derived from human VCP around the phosphorylation site of Ser352 at amino acid range 318-367
Immunogen Region	290-370
Specificity	Phospho-VCP-Ser352 polyclonal antibody (Transitional Endoplasmic Reticulum Atpase) binds to endogenous Transitional Endoplasmic Reticulum Atpase at the amino acid region 290-370 only when phosphorylated at Ser352.
Immunogen Sequence	



Western blot analysis of lysates from NIH/3T3 cells treated with starved 24h, using VCP (Phospho-Ser352) antibody. The lane on the right is blocked with the phospho peptide.



Western blot analysis of 22RV1 using p-VCP (S352) antibody. Antibody was diluted at 1:1000