

Anti-Phospho-THRB-Ser142 antibody (90-170) (STJ90639)

STJ90639

GENERAL INFORMATION

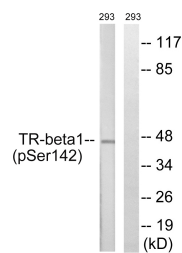
Product Type	Primary antibodies
Short Description	Rabbit polyclonal antibody anti-Phospho-Thyroid Hormone Receptor Beta-Ser142 (90-170) is suitable for use in Western Blot and ELISA research applications.
Applications	WB, ELISA
Host/Source	Rabbit
Reactivity	Human, Mouse, Rat

PRODUCT PROPERTIES

Clonality	Polyclonal
Clone ID	
Concentration	1 mg/mL
Conjugation	Unconjugated
Purification	The antibody was affinity-purified from rabbit anti-serum by affinity-chromatography.
Dilution	WB 1:500-1:2000
Range	ELISA 1:5000
Formulation	PBS, 50% Glycerol, 0.5% BSA and 0.02% Sodium Azide.
Isotype	IgG
Storage	Store at -20°C for up to 1 year from the date of receipt, and avoid repeat freeze-thaw cycles.
Instruction	

TARGET INFORMATION

Gene ID	7068
Gene Symbol	THRB
Uniprot ID	THB_HUMAN
Immunogen	The antiserum was produced against synthesized peptide derived from human TR-beta1 around the phosphorylation site of Ser142 at amino acid range 116-165
Immunogen Region	90-170
Specificity	Phospho-THRB-Ser142 polyclonal antibody (Thyroid Hormone Receptor Beta) binds to endogenous Thyroid Hormone Receptor Beta at the amino acid region 90-170 only when phosphorylated at Ser142.
Immunogen Sequence	



Western blot analysis of lysates from 293 cells treated with PMA 125ng/ml 30', using TR-beta1 (Phospho-Ser142) Antibody. The lane on the right is blocked with the phospho peptide.