

Anti-Phospho-COP1-Ser387 antibody (330-410) (STJ90637)

STJ90637

GENERAL INFORMATION

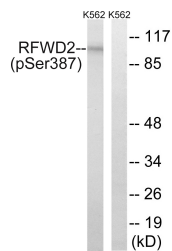
Product Type	Primary antibodies
Short Description	Rabbit polyclonal antibody anti-Phospho-E3 Ubiquitin-Protein Ligase Cop1-Ser387 (330-410) is suitable for use in Western Blot and ELISA research applications.
Applications	WB, ELISA
Host/Source	Rabbit
Reactivity	Human, Mouse

PRODUCT PROPERTIES

Clonality	Polyclonal
Clone ID	
Concentration	1 mg/mL
Conjugation	Unconjugated
Purification	The antibody was affinity-purified from rabbit anti-serum by affinity-chromatography.
Dilution	WB 1:500-1:2000
Range	ELISA 1:5000
Formulation	PBS, 50% Glycerol, 0.5% BSA and 0.02% Sodium Azide.
Isotype	IgG
Storage	Store at -20°C for up to 1 year from the date of receipt, and avoid repeat freeze-thaw cycles.
Instruction	

TARGET INFORMATION

Gene ID	64326
Gene Symbol	COP1
Uniprot ID	COP1_HUMAN
Immunogen	The antiserum was produced against synthesized peptide derived from human RFW2 around the phosphorylation site of Ser387 at amino acid range 353-402
Immunogen Region	330-410
Specificity	Phospho-COP1-Ser387 polyclonal antibody (E3 Ubiquitin-Protein Ligase Cop1) binds to endogenous E3 Ubiquitin-Protein Ligase Cop1 at the amino acid region 330-410 only when phosphorylated at Ser387.
Immunogen Sequence	



Western blot analysis of lysates from K562 cells treated with UV 15', using RFW2 (Phospho-Ser387) Antibody. The lane on the right is blocked with the phospho peptide.