

Anti-Phospho-PAK5/6-Ser602/S560 antibody (540-620) (STJ90635)

STJ90635

GENERAL INFORMATION

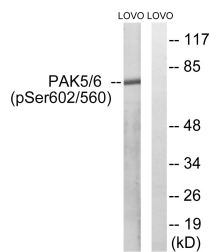
Product Type	Primary antibodies
Short Description	Rabbit polyclonal antibody anti-Phospho-Serine/threonine-protein kinase PAK 5 and Serine/threonine-protein kinase PAK 6-Ser602/S560 (540-620) is suitable for use in Western Blot and ELISA research applications.
Applications	WB, ELISA
Host/Source	Rabbit
Reactivity	Human, Mouse

PRODUCT PROPERTIES

Clonality	Polyclonal
Clone ID	
Concentration	1 mg/mL
Conjugation	Unconjugated
Purification	The antibody was affinity-purified from rabbit anti-serum by affinity-chromatography.
Dilution	WB 1:500-1:2000
Range	ELISA 1:20000
Formulation	PBS, 50% Glycerol, 0.5% BSA and 0.02% Sodium Azide.
Isotype	IgG
Storage	Store at -20°C for up to 1 year from the date of receipt, and avoid repeat freeze-thaw cycles.
Instruction	

TARGET INFORMATION

Gene ID	57144 106821730/56924
Gene Symbol	PAK5 PAK6
Uniprot ID	PAK5_HUMAN PAK6_HUMAN
Immunogen	The antiserum was produced against synthesized peptide derived from human PAK5/6 around the phosphorylation site of Ser602/Ser560 at amino acid range 566-615
Immunogen Region	540-620
Specificity	Phospho-PAK5/6-Ser602/S560 polyclonal antibody (Serine/threonine-protein kinase PAK 5 and Serine/threonine-protein kinase PAK 6) binds to endogenous Serine/threonine-protein kinase PAK 5 and Serine/threonine-protein kinase PAK 6 at the amino acid reg
Immunogen Sequence	



This product is suitable for in-vitro studies under the RESEARCH USE ONLY [RUO] licence. This product must not be used as for diagnostic or other medical purposes.
St John's Laboratory Ltd, Knowledge Dock Business Centre, University Way, London, E16 2RD | Tel: 0208 223 3081