

Anti-Phospho-NFAT5-Ser155 antibody (90-170) (STJ90634)

STJ90634

GENERAL INFORMATION

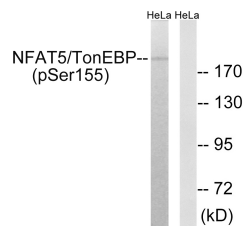
Product Type	Primary antibodies
Short Description	Rabbit polyclonal antibody anti-Phospho-Nuclear Factor Of Activated T-Cells 5-Ser155 (90-170) is suitable for use in Western Blot and ELISA research applications.
Applications	WB, ELISA
Host/Source	Rabbit
Reactivity	Human, Mouse

PRODUCT PROPERTIES

Clonality	Polyclonal
Clone ID	
Concentration	1 mg/mL
Conjugation	Unconjugated
Purification	The antibody was affinity-purified from rabbit anti-serum by affinity-chromatography.
Dilution	WB 1:500-1:2000
Range	ELISA 1:10000
Formulation	PBS, 50% Glycerol, 0.5% BSA and 0.02% Sodium Azide.
Isotype	IgG
Storage Instruction	Store at -20°C for up to 1 year from the date of receipt, and avoid repeat freeze-thaw cycles.

TARGET INFORMATION

Gene ID	10725
Gene Symbol	NFAT5
Uniprot ID	NFAT5_HUMAN
Immunogen	The antiserum was produced against synthesized peptide derived from human NFAT5/TonEBP around the phosphorylation site of Ser155 at amino acid range 121-170
Immunogen Region	90-170
Specificity	Phospho-NFAT5-Ser155 polyclonal antibody (Nuclear Factor Of Activated T-Cells 5) binds to endogenous Nuclear Factor Of Activated T-Cells 5 at the amino acid region 90-170 only when phosphorylated at Ser155.
Immunogen Sequence	



Western blot analysis of lysates from HeLa cells treated with forskolin 40nM 30', using NFAT5/TonEBP (Phospho-Ser155) Antibody. The lane on the right is blocked with the phospho peptide.