

Anti-Phospho-NEUROD1-Ser274 antibody (210-290) (STJ90633)

STJ90633

GENERAL INFORMATION

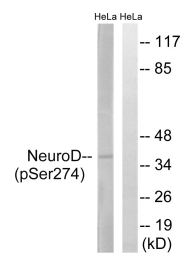
Product Type	Primary antibodies
Short Description	Rabbit polyclonal antibody anti-Phospho-Neurogenic Differentiation Factor 1-Ser274 (210-290) is suitable for use in Western Blot and ELISA research applications.
Applications	WB, ELISA
Host/Source	Rabbit
Reactivity	Human, Mouse, Rat

PRODUCT PROPERTIES

Clonality	Polyclonal
Clone ID	
Concentration	1 mg/mL
Conjugation	Unconjugated
Purification	The antibody was affinity-purified from rabbit anti-serum by affinity-chromatography.
Dilution	WB 1:500-1:2000
Range	ELISA 1:5000
Formulation	PBS, 50% Glycerol, 0.5% BSA and 0.02% Sodium Azide.
Isotype	IgG
Storage Instruction	Store at -20°C for up to 1 year from the date of receipt, and avoid repeat freeze-thaw cycles.

TARGET INFORMATION

Gene ID	4760
Gene Symbol	NEUROD1
Uniprot ID	NDF1_HUMAN
Immunogen	The antiserum was produced against synthesized peptide derived from human Neuro D around the phosphorylation site of Ser274 at amino acid range 240-289
Immunogen Region	210-290
Specificity	Phospho-NEUROD1-Ser274 polyclonal antibody (Neurogenic Differentiation Factor 1) binds to endogenous Neurogenic Differentiation Factor 1 at the amino acid region 210-290 only when phosphorylated at Ser274.
Immunogen Sequence	



Western blot analysis of lysates from HeLa cells treated with UV 15', using Neuro D (Phospho-Ser274) Antibody. The lane on the right is blocked with the phospho peptide.