

Anti-Phospho-KCNB1-Ser805 antibody (740-820) (STJ90632)

STJ90632

GENERAL INFORMATION

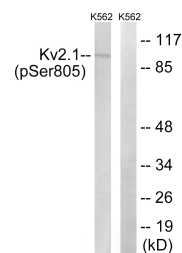
| | |
|--------------------------|------------------------------------------------------------------------------------------------------------------------------------------------------------------------------------|
| Product Type | Primary antibodies |
| Short Description | Rabbit polyclonal antibody anti-Phospho-Potassium Voltage-Gated Channel Subfamily B Member 1-Ser805 (740-820) is suitable for use in Western Blot and ELISA research applications. |
| Applications | WB, ELISA |
| Host/Source | Rabbit |
| Reactivity | Human, Mouse, Rat |

PRODUCT PROPERTIES

| | |
|----------------------------|------------------------------------------------------------------------------------------------|
| Clonality | Polyclonal |
| Clone ID | |
| Concentration | 1 mg/mL |
| Conjugation | Unconjugated |
| Purification | The antibody was affinity-purified from rabbit anti-serum by affinity-chromatography. |
| Dilution | WB 1:500-1:2000 |
| Range | ELISA 1:40000 |
| Formulation | PBS, 50% Glycerol, 0.5% BSA and 0.02% Sodium Azide. |
| Isotype | IgG |
| Storage Instruction | Store at -20°C for up to 1 year from the date of receipt, and avoid repeat freeze-thaw cycles. |

TARGET INFORMATION

| | |
|---------------------------|-----------------------------------------------------------------------------------------------------------------------------------------------------------------------------------------------------------------------------------------------|
| Gene ID | 3745 |
| Gene Symbol | KCNB1 |
| Uniprot ID | KCNB1_HUMAN |
| Immunogen | The antiserum was produced against synthesized peptide derived from human Kv2.1 around the phosphorylation site of Ser805 at amino acid range 771-820 |
| Immunogen Region | 740-820 |
| Specificity | Phospho-KCNB1-Ser805 polyclonal antibody (Potassium Voltage-Gated Channel Subfamily B Member 1) binds to endogenous Potassium Voltage-Gated Channel Subfamily B Member 1 at the amino acid region 740-820 only when phosphorylated at Ser805. |
| Immunogen Sequence | |



Western blot analysis of lysates from K562 cells treated with TNF 200ng/ml 30', using Kv2.1 (Phospho-Ser805) Antibody. The lane on the right is blocked with the phospho peptide.