

Anti-Phospho-EPS15-Tyr849 antibody (790-870) (STJ90629)

STJ90629

GENERAL INFORMATION

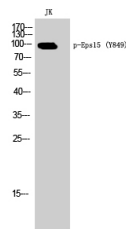
Product Type	Primary antibodies
Short Description	Rabbit polyclonal antibody anti-Phospho-Epidermal Growth Factor Receptor Substrate 15-Tyr849 (790-870) is suitable for use in Western Blot and ELISA research applications.
Applications	WB, ELISA
Host/Source	Rabbit
Reactivity	Human, Mouse, Rat

PRODUCT PROPERTIES

Clonality	Polyclonal
Clone ID	
Concentration	1 mg/mL
Conjugation	Unconjugated
Purification	The antibody was affinity-purified from rabbit anti-serum by affinity-chromatography.
Dilution	WB 1:500-1:2000
Range	ELISA 1:10000
Formulation	PBS, 50% Glycerol, 0.5% BSA and 0.02% Sodium Azide.
Isotype	IgG
Storage	Store at -20°C for up to 1 year from the date of receipt, and avoid repeat freeze-thaw cycles.
Instruction	

TARGET INFORMATION

Gene ID	2060
Gene Symbol	EPS15
Uniprot ID	EPS15_HUMAN
Immunogen	Synthesized phospho-peptide around the phosphorylation site of human Eps15 (phospho Tyr849)
Immunogen Region	790-870
Specificity	Phospho-EPS15-Tyr849 polyclonal antibody (Epidermal Growth Factor Receptor Substrate 15) binds to endogenous Epidermal Growth Factor Receptor Substrate 15 at the amino acid region 790-870 only when phosphorylated at Tyr849.
Immunogen Sequence	



Western blot analysis of JK cells using Phospho-Eps15 (Y849) Polyclonal Antibody

This product is suitable for in-vitro studies under the RESEARCH USE ONLY [RUO] licence. This product must not be used as for diagnostic or other medical purposes.
 St John's Laboratory Ltd, Knowledge Dock Business Centre, University Way, London, E16 2RD | Tel: 0208 223 3081