

Anti-Phospho-EPB41-Tyr660 antibody (600-680) (STJ90628)

STJ90628

GENERAL INFORMATION

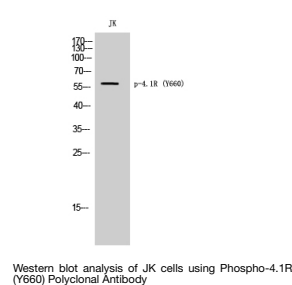
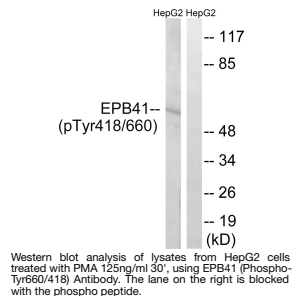
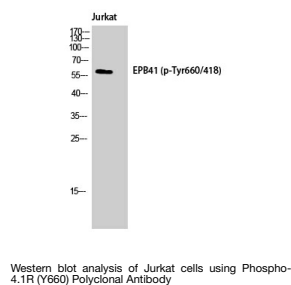
| | |
|--------------------------|---|
| Product Type | Primary antibodies |
| Short Description | Rabbit polyclonal antibody anti-Phospho-Protein 4.1-Tyr660 (600-680) is suitable for use in Western Blot, Immunohistochemistry, Immunofluorescence and ELISA research applications. |
| Applications | WB, IHC-P, IF-P, ELISA |
| Host/Source | Rabbit |
| Reactivity | Human, Mouse |

PRODUCT PROPERTIES

| | |
|----------------------------|--|
| Clonality | Polyclonal |
| Clone ID | |
| Concentration | 1 mg/mL |
| Conjugation | Unconjugated |
| Purification | The antibody was affinity-purified from rabbit anti-serum by affinity-chromatography. |
| Dilution Range | WB 1:500-1:2000 IHC 1:100-1:300 ELISA 1:5000 |
| Formulation | PBS, 50% Glycerol, 0.5% BSA and 0.02% Sodium Azide. |
| Isotype | IgG |
| Storage Instruction | Store at -20°C for up to 1 year from the date of receipt, and avoid repeat freeze-thaw cycles. |

TARGET INFORMATION

| | |
|---------------------------|---|
| Gene ID | 2035 |
| Gene Symbol | EPB41 |
| Uniprot ID | EPB41_HUMAN |
| Immunogen | The antiserum was produced against synthesized peptide derived from human EPB41 around the phosphorylation site of Tyr660/418 at amino acid range 626-675 |
| Immunogen Region | 600-680 |
| Specificity | Phospho-EPB41-Tyr660 polyclonal antibody (Protein 4.1) binds to endogenous Protein 4.1 at the amino acid region 600-680 only when phosphorylated at Tyr660. |
| Immunogen Sequence | |



This product is suitable for in-vitro studies under the RESEARCH USE ONLY [RUO] licence. This product must not be used as for diagnostic or other medical purposes.
St John's Laboratory Ltd, Knowledge Dock Business Centre, University Way, London, E16 2RD | Tel: 0208 223 3081