

Anti-Phospho-CLDN3-Tyr219 antibody (140-220) (STJ90624)

STJ90624

GENERAL INFORMATION

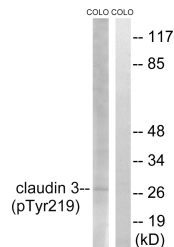
Product Type	Primary antibodies
Short Description	Rabbit polyclonal antibody anti-Phospho-Claudin-3-Tyr219 (140-220) is suitable for use in Western Blot, Immunohistochemistry, Immunofluorescence and ELISA research applications.
Applications	WB, IHC-P, IF-P, ELISA
Host/Source	Rabbit
Reactivity	Human, Rat, Mouse

PRODUCT PROPERTIES

Clonality	Polyclonal
Clone ID	
Concentration	1 mg/mL
Conjugation	Unconjugated
Purification	The antibody was affinity-purified from rabbit anti-serum by affinity-chromatography.
Dilution Range	WB 1:500-1:2000 IHC 1:100-1:300 ELISA 1:5000
Formulation	PBS, 50% Glycerol, 0.5% BSA and 0.02% Sodium Azide.
Isotype	IgG
Storage Instruction	Store at -20°C for up to 1 year from the date of receipt, and avoid repeat freeze-thaw cycles.

TARGET INFORMATION

Gene ID	1365
Gene Symbol	CLDN3
Uniprot ID	CLD3_HUMAN
Immunogen	The antiserum was produced against synthesized peptide derived from human Claudin 3 around the phosphorylation site of Tyr219 at amino acid range 171-220
Immunogen Region	140-220
Specificity	Phospho-CLDN3-Tyr219 polyclonal antibody (Claudin-3) binds to endogenous Claudin-3 at the amino acid region 140-220 only when phosphorylated at Tyr219.
Immunogen Sequence	



Western blot analysis of lysates from COLO205 cells treated with EGF 200ng/ml 30', using Claudin 3 (Phospho-Tyr219) Antibody. The lane on the right is blocked with the phospho peptide.

This product is suitable for in-vitro studies under the RESEARCH USE ONLY [RUO] licence. This product must not be used as for diagnostic or other medical purposes.
St John's Laboratory Ltd, Knowledge Dock Business Centre, University Way, London, E16 2RD | Tel: 0208 223 3081