

Anti-Phospho-BRCA1-Ser1457 antibody (1400-1480) (STJ90622)

STJ90622

GENERAL INFORMATION

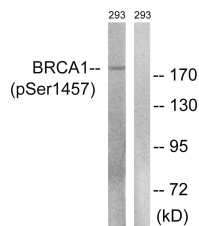
Product Type	Primary antibodies
Short Description	Rabbit polyclonal antibody anti-Phospho-Breast Cancer Type 1 Susceptibility Protein-Ser1457 (1400-1480) is suitable for use in Western Blot and ELISA research applications.
Applications	WB, ELISA
Host/Source	Rabbit
Reactivity	Human, Rat, Mouse

PRODUCT PROPERTIES

Clonality	Polyclonal
Clone ID	
Concentration	1 mg/mL
Conjugation	Unconjugated
Purification	The antibody was affinity-purified from rabbit anti-serum by affinity-chromatography.
Dilution	WB 1:500-1:2000
Range	ELISA 1:5000
Formulation	PBS, 50% Glycerol, 0.5% BSA and 0.02% Sodium Azide.
Isotype	IgG
Storage	Store at -20°C for up to 1 year from the date of receipt, and avoid repeat freeze-thaw cycles.
Instruction	

TARGET INFORMATION

Gene ID	672
Gene Symbol	BRCA1
Uniprot ID	BRCA1_HUMAN
Immunogen	The antiserum was produced against synthesized peptide derived from human BRCA1 around the phosphorylation site of Ser1457 at amino acid range 1423-1472
Immunogen Region	1400-1480
Specificity	Phospho-BRCA1-Ser1457 polyclonal antibody (Breast Cancer Type 1 Susceptibility Protein) binds to endogenous Breast Cancer Type 1 Susceptibility Protein at the amino acid region 1400-1480 only when phosphorylated at Ser1457.
Immunogen Sequence	



Western blot analysis of lysates from 293 cells treated with epo 20U/ml 15', using BRCA1 (Phospho-Ser1457) Antibody. The lane on the right is blocked with the phospho peptide.