

Anti-Phospho-RUNX1-Ser435 antibody (370-450) (STJ90619)

STJ90619

GENERAL INFORMATION

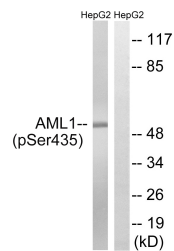
Product Type	Primary antibodies
Short Description	Rabbit polyclonal antibody anti-Phospho-Runt-Related Transcription Factor 1-Ser435 (370-450) is suitable for use in Western Blot and ELISA research applications.
Applications	WB, ELISA
Host/Source	Rabbit
Reactivity	Human, Mouse, Rat

PRODUCT PROPERTIES

Clonality	Polyclonal
Clone ID	
Concentration	1 mg/mL
Conjugation	Unconjugated
Purification	The antibody was affinity-purified from rabbit anti-serum by affinity-chromatography.
Dilution	WB 1:500-1:2000
Range	ELISA 1:10000
Formulation	PBS, 50% Glycerol, 0.5% BSA and 0.02% Sodium Azide.
Isotype	IgG
Storage	Store at -20°C for up to 1 year from the date of receipt, and avoid repeat freeze-thaw cycles.
Instruction	

TARGET INFORMATION

Gene ID	861
Gene Symbol	RUNX1
Uniprot ID	RUNX1_HUMAN
Immunogen	The antiserum was produced against synthesized peptide derived from human AML1 around the phosphorylation site of Ser435 at amino acid range 401-450
Immunogen Region	370-450
Specificity	Phospho-RUNX1-Ser435 polyclonal antibody (Runt-Related Transcription Factor 1) binds to endogenous Runt-Related Transcription Factor 1 at the amino acid region 370-450 only when phosphorylated at Ser435.
Immunogen Sequence	



Western blot analysis of lysates from HepG2 cells treated with PMA 125ng/ml 30', using AML1 (Phospho-Ser435) Antibody. The lane on the right is blocked with the phospho peptide.