

Anti-Phospho-AIRE-Ser156 antibody (100-180) (STJ90618)

STJ90618

GENERAL INFORMATION

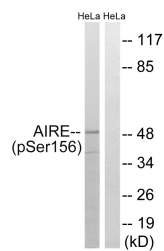
Product Type	Primary antibodies
Short Description	Rabbit polyclonal antibody anti-Phospho-Autoimmune Regulator-Ser156 (100-180) is suitable for use in Western Blot and ELISA research applications.
Applications	WB, ELISA
Host/Source	Rabbit
Reactivity	Human, Rat, Mouse

PRODUCT PROPERTIES

Clonality	Polyclonal
Clone ID	
Concentration	1 mg/mL
Conjugation	Unconjugated
Purification	The antibody was affinity-purified from rabbit anti-serum by affinity-chromatography.
Dilution Range	WB 1:500-1:2000 ELISA 1:5000
Formulation	PBS, 50% Glycerol, 0.5% BSA and 0.02% Sodium Azide.
Isotype	IgG
Storage	Store at -20°C for up to 1 year from the date of receipt, and avoid repeat freeze-thaw cycles.
Instruction	

TARGET INFORMATION

Gene ID	326
Gene Symbol	AIRE
Uniprot ID	AIRE_HUMAN
Immunogen	The antiserum was produced against synthesized peptide derived from human AIRE around the phosphorylation site of Ser156 at amino acid range 126-175
Immunogen Region	100-180
Specificity	Phospho-AIRE-Ser156 polyclonal antibody (Autoimmune Regulator) binds to endogenous Autoimmune Regulator at the amino acid region 100-180 only when phosphorylated at Ser156.
Immunogen Sequence	



This product is suitable for in-vitro studies under the RESEARCH USE ONLY [RUO] licence. This product must not be used as for diagnostic or other medical purposes.
 St John's Laboratory Ltd, Knowledge Dock Business Centre, University Way, London, E16 2RD | Tel: 0208 223 3081