

Anti-Phospho-GRK2-Ser685 antibody (620-700) (STJ90616)

STJ90616

GENERAL INFORMATION

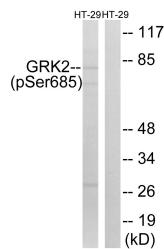
Product Type	Primary antibodies
Short Description	Rabbit polyclonal antibody anti-Phospho-Beta-Adrenergic Receptor Kinase 1-Ser685 (620-700) is suitable for use in Western Blot and ELISA research applications.
Applications	WB, ELISA
Host/Source	Rabbit
Reactivity	Human, Mouse, Rat

PRODUCT PROPERTIES

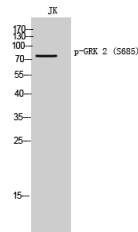
Clonality	Polyclonal
Clone ID	
Concentration	1 mg/mL
Conjugation	Unconjugated
Purification	The antibody was affinity-purified from rabbit anti-serum by affinity-chromatography.
Dilution	WB 1:500-1:2000
Range	ELISA 1:5000
Formulation	PBS, 50% Glycerol, 0.5% BSA and 0.02% Sodium Azide.
Isotype	IgG
Storage	Store at -20°C for up to 1 year from the date of receipt, and avoid repeat freeze-thaw cycles.
Instruction	

TARGET INFORMATION

Gene ID	156
Gene Symbol	GRK2
Uniprot ID	ARBK1_HUMAN
Immunogen	The antiserum was produced against synthesized peptide derived from human GRK2 around the phosphorylation site of Ser685 at amino acid range 640-689
Immunogen Region	620-700
Specificity	Phospho-GRK2-Ser685 polyclonal antibody (Beta-Adrenergic Receptor Kinase 1) binds to endogenous Beta-Adrenergic Receptor Kinase 1 at the amino acid region 620-700 only when phosphorylated at Ser685.
Immunogen Sequence	



Western blot analysis of lysates from HT29 cells treated with insulin 0.01U/ml 15', using GRK2 (Phospho-Ser685) Antibody. The lane on the right is blocked with the phospho peptide.



Western blot analysis of JK cells using Phospho-GRK 2 (S685) Polyclonal Antibody diluted at 1: 500

This product is suitable for in-vitro studies under the RESEARCH USE ONLY [RUO] licence. This product must not be used as for diagnostic or other medical purposes.
 St John's Laboratory Ltd, Knowledge Dock Business Centre, University Way, London, E16 2RD | Tel: 0208 223 3081