

Anti-Phospho-Flg/Bek-Tyr463/466 antibody (410-490) (STJ90612)

STJ90612

GENERAL INFORMATION

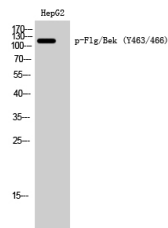
Product Type	Primary antibodies
Short Description	Rabbit polyclonal antibody anti-Phospho-Fibroblast growth factor receptor 1 and Fibroblast growth factor receptor 2-Tyr463/466 (410-490) is suitable for use in Western Blot and ELISA research applications.
Applications	WB, ELISA
Host/Source	Rabbit
Reactivity	Human, Mouse, Rat

PRODUCT PROPERTIES

Clonality	Polyclonal
Clone ID	
Concentration	1 mg/mL
Conjugation	Unconjugated
Purification	The antibody was affinity-purified from rabbit anti-serum by affinity-chromatography.
Dilution	WB 1:500-1:2000
Range	ELISA 1:10000
Formulation	PBS, 50% Glycerol, 0.5% BSA and 0.02% Sodium Azide.
Isotype	IgG
Storage	Store at -20°C for up to 1 year from the date of receipt, and avoid repeat freeze-thaw cycles.
Instruction	

TARGET INFORMATION

Gene ID	2263 2260
Gene Symbol	FGFR2 FGFR1
Uniprot ID	FGFR2_HUMAN FGFR1_HUMAN
Immunogen	Synthesized phospho-peptide around the phosphorylation site of human Flg/Bek (phospho Tyr463/466)
Immunogen Region	410-490
Specificity	Phospho-Flg/Bek-Tyr463/466 polyclonal antibody (Fibroblast growth factor receptor 1 and Fibroblast growth factor receptor 2) binds to endogenous Fibroblast growth factor receptor 1 and Fibroblast growth factor receptor 2 at the amino acid region 410-
Immunogen Sequence	



Western blot analysis of HepG2 cells using Phospho-Flg/Bek (Y463/466) Polyclonal Antibody

This product is suitable for in-vitro studies under the RESEARCH USE ONLY [RUO] licence. This product must not be used as for diagnostic or other medical purposes.
St John's Laboratory Ltd, Knowledge Dock Business Centre, University Way, London, E16 2RD | Tel: 0208 223 3081