

Anti-Phospho-TOP2A-Thr1343 antibody (1280-1360) (STJ90606)

STJ90606

GENERAL INFORMATION

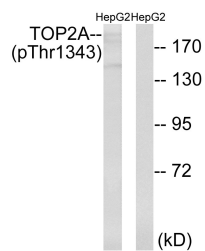
Product Type	Primary antibodies
Short Description	Rabbit polyclonal antibody anti-Phospho-Dna Topoisomerase 2-Alpha-Thr1343 (1280-1360) is suitable for use in Western Blot and ELISA research applications.
Applications	WB, ELISA
Host/Source	Rabbit
Reactivity	Human, Rat, Mouse

PRODUCT PROPERTIES

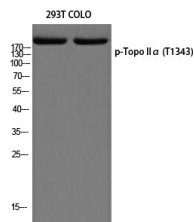
Clonality	Polyclonal
Clone ID	
Concentration	1 mg/mL
Conjugation	Unconjugated
Purification	The antibody was affinity-purified from rabbit anti-serum by affinity-chromatography.
Dilution	WB 1:500-1:2000
Range	ELISA 1:5000
Formulation	PBS, 50% Glycerol, 0.5% BSA and 0.02% Sodium Azide.
Isotype	IgG
Storage Instruction	Store at -20°C for up to 1 year from the date of receipt, and avoid repeat freeze-thaw cycles.

TARGET INFORMATION

Gene ID	7153
Gene Symbol	TOP2A
Uniprot ID	TOP2A_HUMAN
Immunogen	The antiserum was produced against synthesized peptide derived from human TOP2A around the phosphorylation site of Thr1343 at amino acid range 1311-1360
Immunogen Region	1280-1360
Specificity	Phospho-TOP2A-Thr1343 polyclonal antibody (Dna Topoisomerase 2-Alpha) binds to endogenous Dna Topoisomerase 2-Alpha at the amino acid region 1280-1360 only when phosphorylated at Thr1343.
Immunogen Sequence	



Western blot analysis of lysates from HepG2 cells treated with Ca²⁺ 40nM 30', using TOP2A (Phospho-Thr1343) Antibody. The lane on the right is blocked with the phospho peptide.



Western blot analysis of 293T COLO using p-Topo II Alpha (T1343) antibody. Antibody was diluted at 1:2000

This product is suitable for in-vitro studies under the RESEARCH USE ONLY [RUO] licence. This product must not be used as for diagnostic or other medical purposes.
 St John's Laboratory Ltd, Knowledge Dock Business Centre, University Way, London, E16 2RD | Tel: 0208 223 3081