

Anti-Phospho-LCK-Ser540 antibody (40-120) (STJ90603)

STJ90603

GENERAL INFORMATION

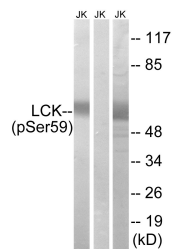
Product Type	Primary antibodies
Short Description	Rabbit polyclonal antibody anti-Phospho-Tyrosine-Protein Kinase Lck-Ser540 (40-120) is suitable for use in Western Blot and ELISA research applications.
Applications	WB, ELISA
Host/Source	Rabbit
Reactivity	Human, Mouse, Rat

PRODUCT PROPERTIES

Clonality	Polyclonal
Clone ID	
Concentration	1 mg/mL
Conjugation	Unconjugated
Purification	The antibody was affinity-purified from rabbit anti-serum by affinity-chromatography.
Dilution Range	WB 1:500-1:2000 ELISA 1:40000
Formulation	PBS, 50% Glycerol, 0.5% BSA and 0.02% Sodium Azide.
Isotype	IgG
Storage	Store at -20°C for up to 1 year from the date of receipt, and avoid repeat freeze-thaw cycles.
Instruction	

TARGET INFORMATION

Gene ID	3932
Gene Symbol	LCK
Uniprot ID	LCK_HUMAN
Immunogen	The antiserum was produced against synthesized peptide derived from human LCK around the phosphorylation site of Ser59 at amino acid range 26-75
Immunogen Region	40-120
Specificity	Phospho-LCK-Ser540 polyclonal antibody (Tyrosine-Protein Kinase Lck) binds to endogenous Tyrosine-Protein Kinase Lck at the amino acid region 40-120 only when phosphorylated at Ser540.
Immunogen Sequence	



Western blot analysis of lysates from Jurkat cells treated with IFN 2500U/ML 30', using LCK (Phospho-Ser59) Antibody. The lane on the right is blocked with the phospho-peptide.