

Anti-Phospho-FOS-Ser32 antibody (10-90) (STJ90602)

STJ90602

GENERAL INFORMATION

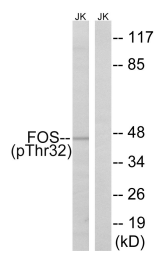
Product Type	Primary antibodies
Short Description	Rabbit polyclonal antibody anti-Phospho-Proto-Oncogene C-Fos-Ser32 (10-90) is suitable for use in Western Blot and ELISA research applications.
Applications	WB, ELISA
Host/Source	Rabbit
Reactivity	Human, Mouse, Rat

PRODUCT PROPERTIES

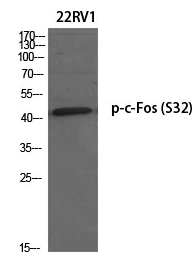
Clonality	Polyclonal
Clone ID	
Concentration	1 mg/mL
Conjugation	Unconjugated
Purification	The antibody was affinity-purified from rabbit anti-serum by affinity-chromatography.
Dilution Range	WB 1:500-1:2000 ELISA 1:5000
Formulation	PBS, 50% Glycerol, 0.5% BSA and 0.02% Sodium Azide.
Isotype	IgG
Storage	Store at -20°C for up to 1 year from the date of receipt, and avoid repeat freeze-thaw cycles.
Instruction	

TARGET INFORMATION

Gene ID	2353
Gene Symbol	FOS
Uniprot ID	FOS_HUMAN
Immunogen	The antiserum was produced against synthesized peptide derived from human FOS around the phosphorylation site of Ser32 at amino acid range 15-64
Immunogen Region	10-90
Specificity	Phospho-FOS-Ser32 polyclonal antibody (Proto-Oncogene C-Fos) binds to endogenous Proto-Oncogene C-Fos at the amino acid region 10-90 only when phosphorylated at Ser32.
Immunogen Sequence	



Western blot analysis of lysates from Jurkat cells treated with starved 24h, using FOS (Phospho-Ser32) Antibody. The lane on the right is blocked with the phospho peptide.



Western blot analysis of various cells using Phospho-c-Fos (S32) Polyclonal Antibody diluted at 1: 500 cells nucleus extracted by Minute™ Cytoplasmic and Nuclear Fractionation kit (SC-005, Inventibiotech, MN, USA).

This product is suitable for in-vitro studies under the RESEARCH USE ONLY [RUO] licence. This product must not be used as for diagnostic or other medical purposes.
St John's Laboratory Ltd, Knowledge Dock Business Centre, University Way, London, E16 2RD | Tel: 0208 223 3081