

Anti-Phospho-PAK2-Ser192 antibody (130-210) (STJ90589)

STJ90589

GENERAL INFORMATION

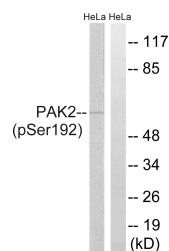
Product Type	Primary antibodies
Short Description	Rabbit polyclonal antibody anti-Phospho-Serine/Threonine-Protein Kinase Pak 2-Ser192 (130-210) is suitable for use in Western Blot and ELISA research applications.
Applications	WB, ELISA
Host/Source	Rabbit
Reactivity	Human, Mouse, Rat

PRODUCT PROPERTIES

Clonality	Polyclonal
Clone ID	
Concentration	1 mg/mL
Conjugation	Unconjugated
Purification	The antibody was affinity-purified from rabbit anti-serum by affinity-chromatography.
Dilution	WB 1:500-1:2000
Range	ELISA 1:5000
Formulation	PBS, 50% Glycerol, 0.5% BSA and 0.02% Sodium Azide.
Isotype	IgG
Storage	Store at -20°C for up to 1 year from the date of receipt, and avoid repeat freeze-thaw cycles.
Instruction	

TARGET INFORMATION

Gene ID	5062
Gene Symbol	PAK2
Uniprot ID	PAK2_HUMAN
Immunogen	The antiserum was produced against synthesized peptide derived from human PAK2 around the phosphorylation site of Ser192 at amino acid range 158-207
Immunogen Region	130-210
Specificity	Phospho-PAK2-Ser192 polyclonal antibody (Serine/Threonine-Protein Kinase Pak 2) binds to endogenous Serine/Threonine-Protein Kinase Pak 2 at the amino acid region 130-210 only when phosphorylated at Ser192.
Immunogen Sequence	



Western blot analysis of lysates from HeLa cells, using PAK2 (Phospho-Ser192) Antibody. The lane on the right is blocked with the phospho peptide.