

Anti-Phospho-MKNK1-Thr255 antibody (190-270) (STJ90587)

STJ90587

GENERAL INFORMATION

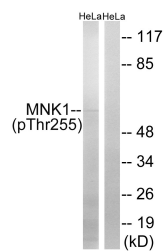
Product Type	Primary antibodies
Short Description	Rabbit polyclonal antibody anti-Phospho-Map Kinase-Interacting Serine/Threonine-Protein Kinase 1-Thr255 (190-270) is suitable for use in Western Blot and ELISA research applications.
Applications	WB, ELISA
Host/Source	Rabbit
Reactivity	Human, Mouse, Rat

PRODUCT PROPERTIES

Clonality	Polyclonal
Clone ID	
Concentration	1 mg/mL
Conjugation	Unconjugated
Purification	The antibody was affinity-purified from rabbit anti-serum by affinity-chromatography.
Dilution	WB 1:500-1:2000
Range	ELISA 1:20000
Formulation	PBS, 50% Glycerol, 0.5% BSA and 0.02% Sodium Azide.
Isotype	IgG
Storage	Store at -20°C for up to 1 year from the date of receipt, and avoid repeat freeze-thaw cycles.
Instruction	

TARGET INFORMATION

Gene ID	8569
Gene Symbol	MKNK1
Uniprot ID	MKNK1_HUMAN
Immunogen	The antiserum was produced against synthesized peptide derived from human MNK1 around the phosphorylation site of Thr255 at amino acid range 221-270
Immunogen Region	190-270
Specificity	Phospho-MKNK1-Thr255 polyclonal antibody (Map Kinase-Interacting Serine/Threonine-Protein Kinase 1) binds to endogenous Map Kinase-Interacting Serine/Threonine-Protein Kinase 1 at the amino acid region 190-270 only when phosphorylated at Thr255.
Immunogen Sequence	



Western blot analysis of lysates from HeLa cells treated with Adriamycin 0.5ug/ml 24h, using MNK1 (Phospho-Thr255) Antibody. The lane on the right is blocked with the phospho peptide.